



CATALOGO PRODOTTI

PRODUCTS CATALOGUE



PINZE SERRAGGIO CLAMPING COLLETS



**PINZE A SPINTA DIN 6343; PINZE A DOPPIO CONO;
PINZE PER CARICATORI E DI AVANZAMENTO BARRA;
PINZE REGISTRABILI IN METALLO DURO; BUSSOLE FISSE
IN METALLO DURO; PINZE PORTA UTENSILI ER DIN
6499/B.**



**COLLETS DIN 6343; DOUBLE CONE COLLETS; BARLOADERS
COLLETS; FEED FINGERS; HARD METAL
ADJUSTABLE COLLETS; HARD METAL GUIDE BUSHINGS;
TOOL HOLDER COLLETS ER DIN 6499/B.**



CHIA-MO SRL
VIA CADUTI DI SABBIBUONO, 12
40011 ANZOLA DELL'EMILIA
BOLOGNA ITALY

TEL +39 051734153
FAX +39 051734958

WWW.CHIAMO.IT
INFO@CHIAMO.IT



FORMA DEGLI ALESAGGI

CLAMPING FORM



(L) LISCIO
SMOOTH



(Z) ZIGRINATO
SHAGREENED



(Q) QUADRATO
SQUARE



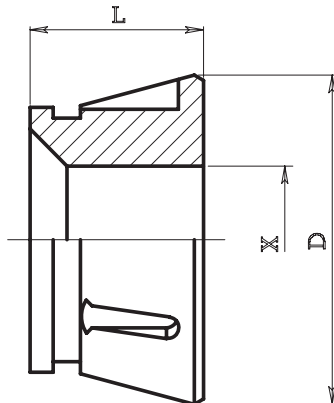
(E) ESAGONALE
HEXAGONAL





PINZE DI SERRAGGIO Tipo 015

CLAMPING COLLETS



CARATTERISTICHE:

- Semplifica e rende più rapido il cambio pinza
- Aumenta la rigidità del bloccaggio del pezzo da lavorare

CHARACTERISTICS:

- Simplified and quicker collet changing
- Increased rigidity in blocking the piece to be machined

Code	Tip			max bore		
ART.	Passaggio barra	D	L	alesaggio max		
				○	⬡	□
015.065 (L)	65	99.5	53	65	—	—
015.065 (Z-E-Q)	65	99.5	58	65	56	46
015.080 (Z-L-E-Q)	80	114.5	53	80	68	56

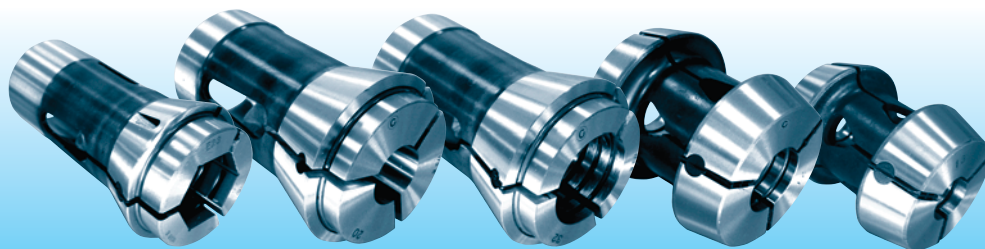
ATTREZZATURA PNEUMATICA PER CAMBIO PINZA

PNEUMATIC COLLETS CHANGE EQUIPMENT



Code	Collet Tipe	Collet Code
ART.	Passaggio barra Pinza	Art. pinza
015.065CH	65	015.065 (Z-L-E-Q)
015.080CH	80	015.080 (Z-L-E-Q)

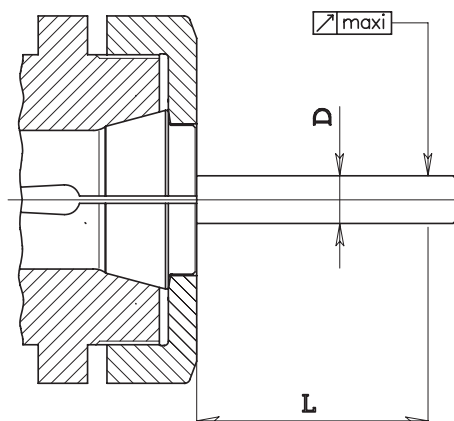




PROVA DI CONCENTRICITÀ

ROTATIONARY CONCENTRICITY TEST

Alesaggio (Bores)		L	limite max di concentricità (max concentricity limit)
0,5	1	3	0,015
1	1,6	6	0,02
1,6	3	10	0,02
3	6	16	0,02
6	10	25	0,02
10	18	40	0,03
18	24	50	0,03
24	30	60	0,03
30	50	80	0,04
50		100	0,04



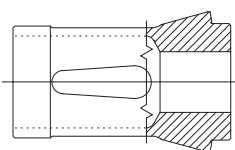
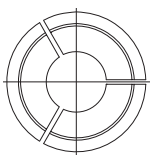
Le pinze Chia-mo sono costruite con acciaio certificato altamente legato.

Tutto il ciclo produttivo viene svolto nella nostra officina con macchine utensili di alta precisione in accordo alla normativa DIN 6343 ed è rigorosamente controllato.

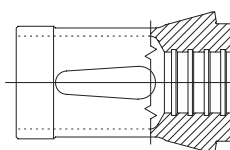
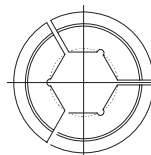
Chia-mo collets are produced with certified top quality steel. All production cycle is carried out in our factory with high precision machines according to DIN 6343 specification and is carefully controlled.

FORMA DEGLI ALESAGGI

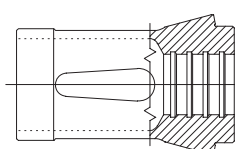
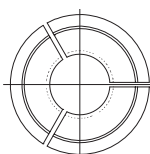
CLAMPING FORM



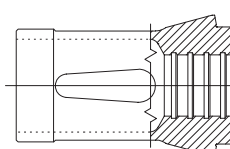
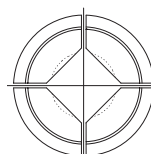
L
LISCIO
SMOOTH



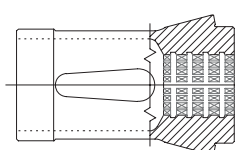
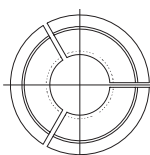
E
ESAGONALE
HEXAGONAL



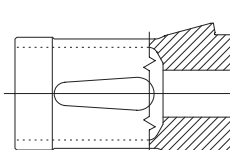
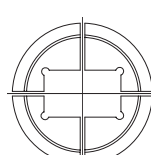
R
RIGATO
LINED



Q
QUADRATO
SQUARE



Z
ZIGRINATO*
SHAGREENED*
* su richiesta
* on request



Esecuzione di qualsiasi tipo di figura su richiesta
We manufacture whatever kind of collet on request

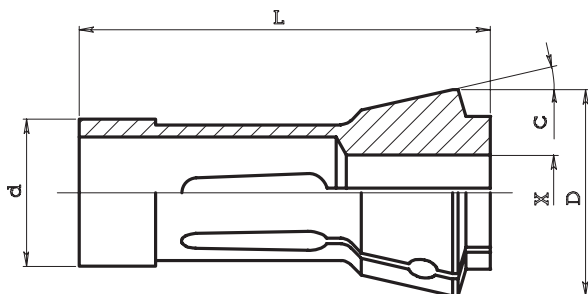




PINZE SPINTE Tipo 010

DIN 6343

COLLETS

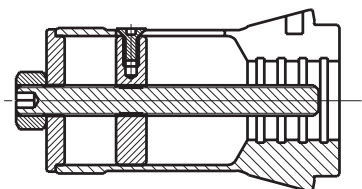


Code	ART.	d	D	L	C	max bore		
						alesaggio max	○	□
010.006	101 E	8	12	42	16°	6	—	—
010.013	110 E	10	16	43	15°	7	—	—
010.014	109 E	10	16	47	20°	7	6	5
010.019		12	17	27	20°	8.5	—	—
010.025	117 E	14	18	46	13°	10	8	7
010.027		12	18	64	16°	10	8	7
010.028	116 E	13	19	64	16°	10	8	7
010.029	120 E	15	21	64	16°	12	10	9
010.030	121 E	15	22	47	20°	10	9	7
010.032	123 E	16	22	55	15°	12	10	7
010.036		18	23	52		13	—	—
010.038	127 E	18	25	67	15°	12	10	9
010.042	136 E	20	26	54	15°	16	12	10
010.043	1299E	20	27.5	60	15°	17	15	12
010.045	138 E	20	28	67	16°	16	12	10
010.049	139 E	22	28	67	13°	16	12	10
010.051	140 E	22	30	55	15°	18	15	12
010.053	1323E	22	32	66	16°	18	15	12
010.060	143 E	25	31	54	15°	21	18	15
010.063	144 E	25	34	65	15°	20	17	14
010.064	145 E	25	35	77	16°	20	17	14

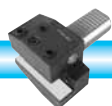
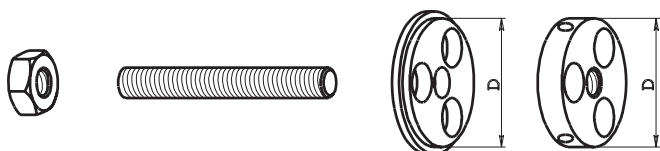
Code	ART.	d	D	L	C	max bore		
						alesaggio max	○	□
010.065	146 E	26	32	67	13°	20	17	14
010.067	147 E	27	38	72.7	15°	23	19	16
010.070	148 E	28	38	70	15°	23	20	16
010.074	1446E	30	38	65	15°	25	22	18
010.078	157 E	30	42	80	16°	25	22	18
010.084	161 E	32	45	75	15°	26	22	18
010.086	1473E	32	40	65	15°	26	22	18
010.092	162 E	35	43	70	15°	25	22	18
010.093	163 E	35	48	80	15°	30	26	22
010.101	1536E	37	47	92	16°	32	30	22
010.102		38	50.3	86	15°	32	29	22
010.111	171 E	42	55	94	15°	36	32	25
010.117	173 E	48	60	94	15°	42	36	30
010.121		52	63	92	15°	46	38	32
010.122		52	65	94	15°	46	38	32
010.127	177 E	58	70	94	15°	52	45	36
010.130		60	72	102	15°	54	40	32
010.133	185 E	66	84	110	15°	60	52	42
010.140		80	98	115	15°	70	60	50
010.147		95	117	125	15°	80	68	56
010.150		115	135	140	15°	100	86	80

FERMI PER PINZE Tipo 011

COLLET STOPPERS



Code	For Collets	
ART.	per pinza	D
011.051	010.051	17
011.084	010.084	26
011.117	010.117	42.5
011.127	010.127	52.3
011.133	010.133	60,5



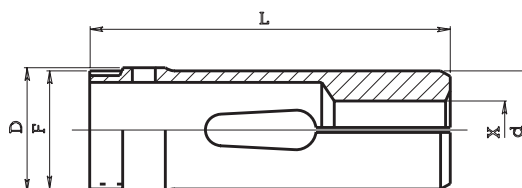


PINZE DI AVANZAMENTO Tipo 012

FEED FINGERS COLLETS

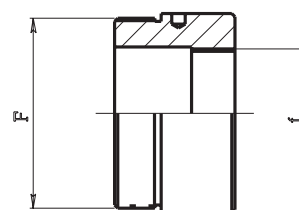


Code						max bores		
ART.	D	d	L	F sx	alesaggio max			
					○	◇	□	
012.007	207 E	18	16	70	16x1	12	11	9
012.009	217 E	21.5	20.5	70	20x1	16	14	11
012.025	220 E	24	22	85	22x1	18	16	13
012.037	236 E	30	29	95	28x1	25	22	17
012.038	237 E	31	29	90	29x1	25	22	17
012.052		36	35	116	34x1	30	26	20
012.060	254 E	42	40	116	40x1	36	30	25
012.073	260 E	52	50	116	50x1	46	40	32
012.077		54	52	130	51x1	46	40	32
012.083	273 E	60	58	140	58x1	52	45	36



ADATTATORI PER PINZE DI AVANZAMENTO Tipo 013

FEED FINGERS FITS



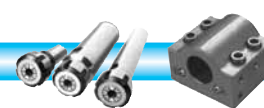
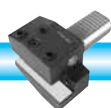
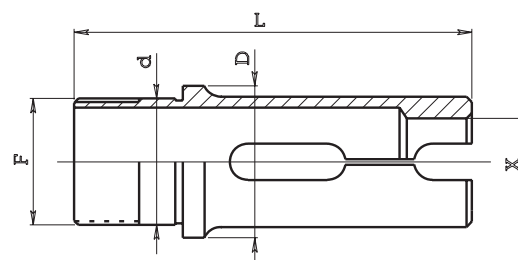
Code						Machine
ART.	F sx	f sx	da	a	MACCHINA	
013.101	22x1	16x1	012.025	012.007	INDEX 18 riduzione a INDEX 12	
013.102	28x1	22x1	012.037	012.025	INDEX 24 riduzione a INDEX 18	
013.103	29x1	22x1	012.038	012.025	INDEX 25 riduzione a INDEX 18	
013.104	40x1	28x1	012.060	012.037	INDEX 36/B42 riduzione a INDEX 24/B30	
013.105	40x1	29x1	012.060	012.038	INDEX 36/B42 riduzione a INDEX 25	
013.106	58x1	40x1	012.083	012.060	INDEX 52/B60 riduzione a INDEX 36/B42	

PINZE DI AVANZAMENTO CON MANDATA ESTERNA Tipo 014

FEED FINGERS WITH OUTSIDE SPRING CATCH



Code						max bores		
ART.	D	d	L	F	alesaggio max			
					○	◇	□	
014.003	242 E	42	36	120	36x1.5	30	26	21
014.006	259 E	56	50	138	50x1.5	42	36	29
014.012	278 E	75	68	138	68x1.5	60	52	42

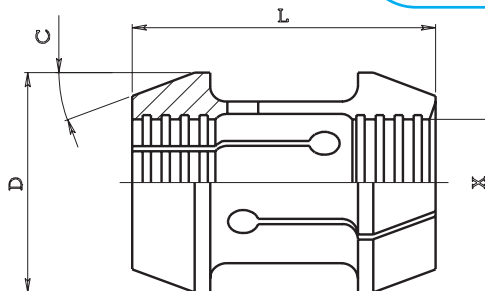




PINZE A DOPPIO CONO Tipo 016

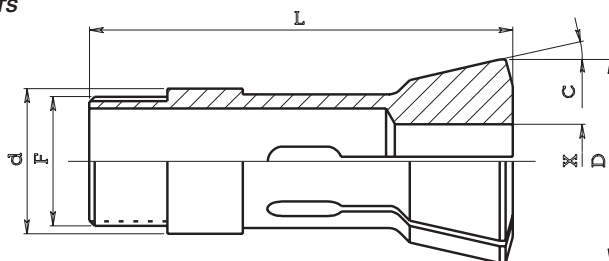
DOUBLE CONE COLLETS

Code	D	L	C	max bores		
				alesaggio max		
ART.	D	L	C	○	⬡	□
016.024	34	56	17°30'	26	22	18
016.052	34.5	74	25°	26	22	18
016.054	26	55	25°	15	13	10
016.055	50	80	20°	36	31	25
016.043	60	80	17°	45	39	30
016.056	69.5	100	18°	60	52	42
016.051	70	80	16°	52	43	36
016.057	72	100	17°	56	50	40
016.062	81	90	17°	60	52	42
016.070	91	100	17°	70	62	50
016.080	108	105	17°	80	68	56
016.100	130	120	17°	100	86	70
016.120	155	130	16.45°	120	105	95



PINZE TIRATE Tipo 018

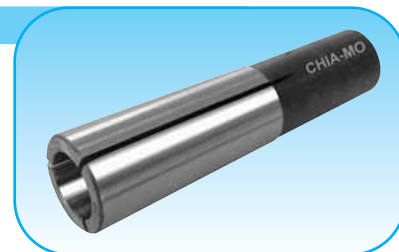
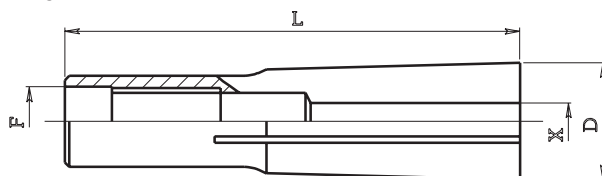
DRAW BACK COLLETS



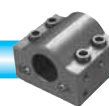
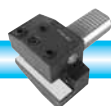
Code	ART.	d	D	L	C	F		max bores			
								alesaggio max			
								○	⬡	□	
	018.020	324E	15	21.5	55	20°	13x1		13	—	—
	018.028		20	26.3	73	15°	19.7x1.66	a dente di sega	20	—	—
	018.046		25	33.5	87.5	16°	23x1		22	—	—
	018.048		25	33.7	97.6	15°	24.7x15	a dente di sega	25	20	16

PINZE PORTA UTENSILI A CONO MORSE Tipo 020

MORSE TAPER COLLETS



Code					M.T.				Machine
ART.	D	L	F	C.M.	X		progr.	MACCHINA	
					min	max			
020.200	18	69	M10	2	2	14	0.25	GIORGI GM20-25-30-32 / ITS TCA 301 / SAIC B26 DIPLOMATIC FR50 / STEINEL SH1-SV1-SV3-5 / BRIDGEPORT testa M (F3/8"-16)	
020.300	24	86	M12	3	2	18	0.5	CLARKSON affilatrice MARK1 / RAVETTA PB32 DIPLOMATIC FR70 / ITS 36-60 / SAIC B45	





PINZE PER CARICATORI Tipo 035 e 036

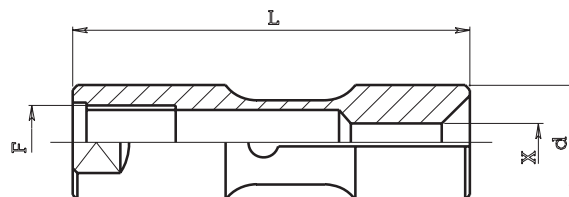
BARLOADER COLLETS

PINZE PER CARICATORI CON FILETTO DESTRO

BARLOADER COLLETS WITH RIGHT THREAD



Code				max bores		Machine
ART.	d	L	F	X min	X max	caricatore
036.070	7.5	40	5x0.5	1.6	6.5	IEMCA
036.100	10	50	6x0.75	2	8	CUCCHI
036.101	10	40	6x0.75	2	8	IEMCA
036.120	12	52	7x0.75	2	10.5	CUCCHI
036.121	12	42	7x0.75	2	10.5	IEMCA
036.140	14	52	8x1	3	12.5	CUCCHI
036.150	15	52	8x1	2	13.5	CUCCHI
036.151	15	42	8x1	2	13.5	IEMCA
036.160	16	52	8x1	10	14	CUCCHI
036.161	16	42	8x1	10	14	IEMCA
036.180	18	59	10x1	4	16	CUCCHI
036.200	20	59	10x1	3	18	CUCCHI e IEMCA
036.220	22	59	10x1	16	20	CUCCHI E IEMCA
036.250	25	59	10x1	4	23	IEMCA
036.251	25	59	14x1	4	23	CUCCHI
036.300	30	65	10x1	8	28	IEMCA
036.301	30	65	18x1.5	10	28	CUCCHI
036.320	32	65	10x1	29	30	IEMCA
036.400	40	70	25x1.5	10	37	CUCCHI e IEMCA
036.420	42	70	25x1.5	38	39	CUCCHI E IEMCA
036.460	46	72	25x1.5	37	42	CUCCHI e IEMCA
036.550	55	80	25x1.5	43	51	CUCCHI e IEMCA (1)
036.600	60	80	25x1.5	30	55	CUCCHI e IEMCA
036.650	65	80	25x1.5	56	60	CUCCHI e IEMCA
036.700	69.5	80	25x1.5	61	65	CUCCHI e IEMCA
036.750	75	80	25x1.5	66	70	CUCCHI e IEMCA

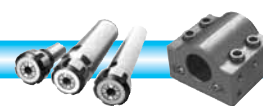
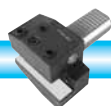


(1) A RICHIESTA
On request

PINZE PER CARICATORI CON FILETTO SINISTRO

BARLOADER COLLETS WITH LEFT THREAD

Code				max bores		Machine
ART.	d	L	F	X min	X max	caricatore
035.190	19	60	10x1 sx	4	16	CUCCHI PB 20
035.200	20	60	10x1 sx	17	18	CUCCHI PB 20
035.230	23	60	14x1 sx	4	20	CUCCHI PB 24
035.250	25	60	14x1 sx	20	23	CUCCHI PB 24
035.290	29	65	18x1.5 sx	4	26	CUCCHI PB 30
035.300	30	65	18x1.5 sx	26	27.5	CUCCHI PB 30
035.350	35	70	18x1.5 sx	24	33	CUCCHI PB 35
035.370	37	70	25x1.5 sx	10	34	CUCCHI PB 38
035.390	39	70	25x1.5 sx	32	36	CUCCHI PB 40
035.410	41	70	25x1.5 sx	36	38	CUCCHI PB 42
035.470	47	70	30x1.5 sx	14	43	CUCCHI PB 48
035.490	49	70	30x1.5 sx	44	45	CUCCHI PB 50
035.590	59	80	30x1.5 sx	30	55	CUCCHI PB 60
035.650	65	80	30x1.5 sx	56	60	CUCCHI PB 68
035.700	69.5	80	30x1.5 sx	61	65	CUCCHI PB 70-72
035.750	75	80	30x1.5 sx	66	70	CUCCHI PB 75





ROTANTI PER CARICATORI Tipo 516 e 517

BARLOADERS REVOLVING

PER CARICATORI "IEMCA" CON FILETTO DESTRO

REVOLVING "IEMCA" WITH RIGHT THREAD

ART. (Code)	D	L	F	d	fig.
516.007	7.5	126	6x0.75	5x0.5	1
516.010	10	113	8x1	6x0.75	1
516.012	12	116	10x1	7x0.75	1
516.015	15	121	12x1.5	8x1	1
516.020	20	133	14x1.5	10x1	1
516.025	25	133	14x1.5	10x1	1
516.030	30	135	14x1.5	10x1	1

PER CARICATORI "CUCCHI" CON FILETTO DESTRO

REVOLVING "CUCCHI" WITH RIGHT THREAD

ART. (Code)	D	L	F	d	fig.
517.010	10	107	7x1	6x0.75	2
517.012	12	107	8x1.25	7x0.75	2
517.014	14	107	10x1.5	8x1	2
517.016	16	107	10x1.5	8x1	2
517.019	19	118	12x1.75	10x1	2
517.025	25	118	20x1.5	14x1	2
517.030	30	123	24x1.5	18x1.5	2
517.040	40	61	28x1.5	25x1.5	4

PER CARICATORI "CUCCHI" CON FILETTO SINISTRO

REVOLVING "CUCCHI" WITH LEFT THREAD

ART. (Code)	D	L	F	d	fig.
517.120	19	100	17x1 sx	10x1 sx	2
517.120P	19	100	17x1 sx	14x1.5 sx	2
517.120S	19	105	17x1 sx	10x1 sx	3
517.125	24	100	20x1.5 sx	14x1 sx	2
517.125P	24	100	20x1.5 sx	20x1.5 sx	2
517.125S	24	105	20x1.5 sx	14x1 sx	3
517.130	29.3	100	26x1.5 sx	18x1.5 sx	2
517.130S	29.3	100	26x1.5 sx	18x1.5 sx	3
517.130P	29.3	100	26x1.5 sx	26x1.5 sx	2
517.135	35	100	30x1.5 sx	18x1.5 sx	2
517.135P	35	100	30x1.5 sx	30x1.5 sx	2
517.138	38	83	30x1.5 sx	25x1.5 sx	2
517.138P	38	83	30x1.5 sx	30x1.5 sx	2
517.145	45	100	36x1.5 sx	30x1.5 sx	2
517.145P	45	100	36x1.5 sx	36x1.5 sx	2
517.148	48	100	36x1.5 sx	30x1.5 sx	2
517.148P	48	100	36x1.5 sx	36x1.5 sx	2
517.160	60	113	50x1.5 sx	30x1.5 sx	2

PER CARICATORI "GIORGI" CON FILETTO DESTRO

REVOLVING "GIORGI" WITH RIGHT THREAD

ART. (Code)	D	L	F	d	fig.
517.719	19	92	14x1.5	10x1	2
517.728	28	100	20x1.5	14x1	2

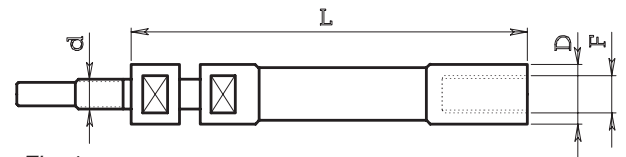


Fig. 1

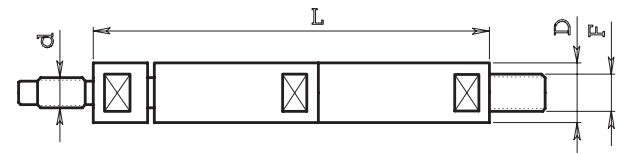


Fig. 2

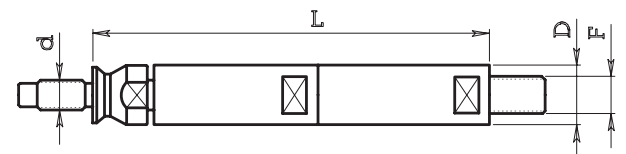


Fig. 3

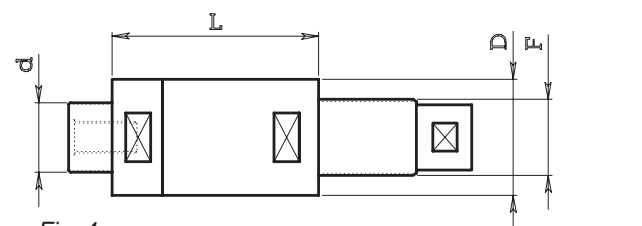
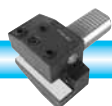


Fig. 4





PINZE PER CARICATORI Tipo 034

BARLOADERS COLLETS

PER CARICATORI (FOR BARLOADER):

FMB - TRAUB - HAGENUK - IEMCA - ROBOBAR
LNS - SAMECA - MINISPRINT - MINITURBO

ART. (Code)	D	L	F	X min	X max	Ø B	A	fig.
034.105	5	37	M 4	1,5	4	-	-	2
034.107	7	37	M 5	2	5,5	-	-	2
034.110	10	40	7 H7	3	8	4,1	6	1
034.112	12	40	8 H7	3	10	4,1	6	1
034.115	15	40	11 H7	3	13	6,1	6	1
034.116	16	40	11 H7	3	14	6,1	6	1
034.118	18	40	11 H7	3	16	6,1	6	1
034.120	20	65	14 H7	4	18	8,1	7	1
034.125	25	65	20 H7	4	22	8,1	7	1
034.132	32	65	20 H7	10	29	8,1	7	1

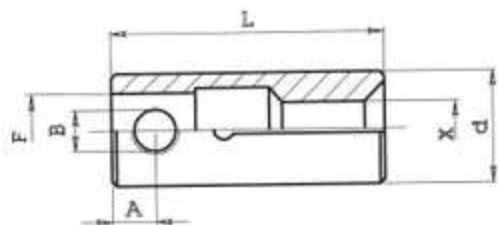


Fig. 1

PER CARICATORI (FOR BARLOADER):

LNS TRYTON

ART. (Code)	D	L	F	X min	X max	fig.
034.006	6	30	M 4	1,5	4,5	2
034.007	7	30	M 4	2	5	2
034.010	10	30	M 5	2	8	2
034.012	12	30	M 6	3	9,5	2
034.013	12,5	30	M 6	9,5	10,5	2
034.017	16,5	35	M 8	4	14,5	2
034.020	20	35	M 10	4	18	2

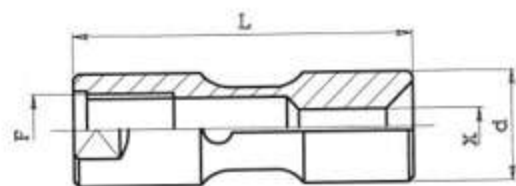


Fig. 2

PER CARICATORI (FOR BARLOADER):

FMB - TRAUB - HAGENUK - IEMCA - ROBOBAR
LNS - SAMECA - MINISPRINT - MINITURBO

ART. (Code)	D	L	F	X min	X max	fig.
034.225	25	90	20 H7	3	20	3
034.232	32	90	20 H7	5	29,5	3
034.236	36	90	20 H7	5	33	3

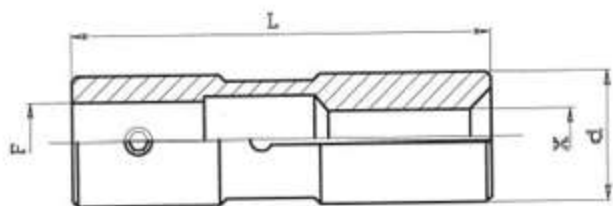
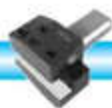


Fig. 3





ROTANTI PER CARICATORI Tipo 518

BARLOADERS REVOLVING

PER CARICATORI (FOR BARLOADER):

TRAUB - FMB - HAGENUK - LNS

ART. (Code)	D	L	F	d	fig.
518.005	5,5	69	-	M 4	1
518.007	7	78,5	M 5	M 5	1

PER CARICATORI (FOR BARLOADER):

FMB - HAGENUK

ART. (Code)	D	L	F	d	H	fig.
518.110	10	45,5	8	7	31	2
518.112	12	45,5	8	8	31	2

PER CARICATORI (FOR BARLOADER):

FMB - HAGENUK - TRAUB

ART. (Code)	D	L	F	d	H	fig.
518.115	15	50	12	11	31	2
518.118	18	50	12	11	31	2
518.120	20	50	17	14	31	2
518.125	25	50	20	20	31	2

PER CARICATORI (FOR BARLOADER):

TORNOS ROBOBAR

ART. (Code)	D	L	F	d	fig.
518.205	5,5	78	M 3	M 4	1
518.207	7,5	78	5	M 5	1
518.210	10,5	81	8	7	3
518.216	16	126	10	11	3
518.218	18	126	10	11	3
518.221	20,5	127	14	14	3
518.225	25	127	20	20	3
518.226	26	127	20	20	3
518.236	36	127	25	20	3

PER CARICATORI (FOR BARLOADER):

TRAUB - FMB - HAGENUK - LNS

ART. (Code)	D	L	F	d	fig.
518.310	10	51	8	7	3
518.312	12	51	8	8	3
518.315	15	51	12	11	3
518.318	18	51	12	11	3
518.320	20	56	17	14	3
518.320B	20	51	12	11	3
518.325	25	58,5	20	20	3

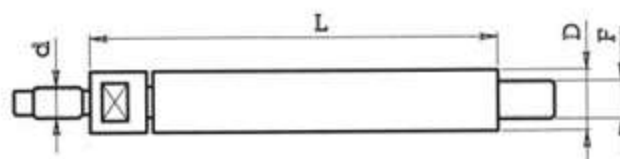


Fig. 1

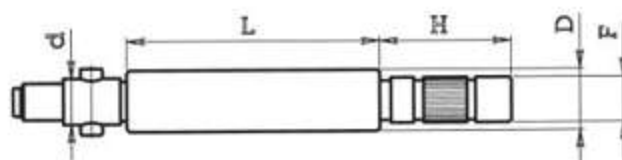


Fig. 2

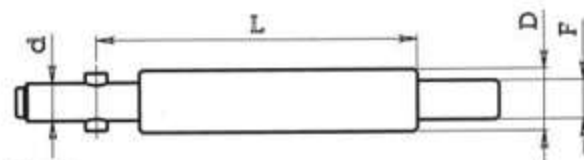


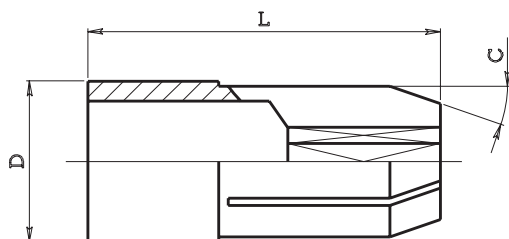
Fig. 3





PINZE PER ROTANTI Tipo 039

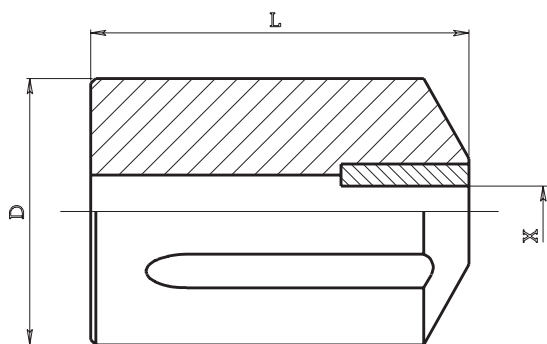
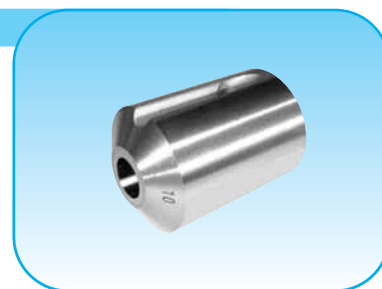
REVOLVING COLLETS



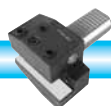
ART. (Code)	D	L	C	macchine (machines)
039.110	9	30	19°	STROHM M4-5 / TORNOS M4-T4
039.130	15	35	19°	STROHM 105-125 / TORNOS M10-R10
039.150	16	35	19°	STROHM 105-125 / TOBRE 10 / TORNOS M10-R10
039.220	28	45	29°	STROHM 205 / TORNOS M20-RR20
039.230	32	45	19°	STROHM 255 / TORNOS M25

BUSSOLE GUIDA BARRA FISSE IN METALLO DURO Tipo 040

HARD METAL FIXED BUSHES



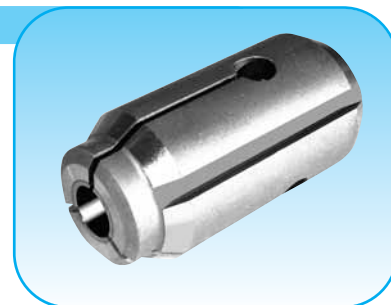
ART. (Code)	D	L	X max	macchine (machines)
040.011	10	18	4.5	STROHM M4-5 / TORNOS M3
040.020	13	30	8	PETERMAN 1-P4 / TORNOS M4-M6-T4-TV / BECHLER A7
040.031	15	30	10	STROHM M75-105-125 / TORNOS M7
040.040	16	30	10	PETERMAN P7-P7R / BECHLER A10 / STROHM M75-105-125
040.050	20	30	13	BECHET 1068-1268 / STROHM 125 / BECHLER A10 / PETERMAN 10-10H7
040.051	22	35	13	TORNOS R10
040.060	25	35	18	PETERMAN 10-10HS-10R-10HSR / OCEA THF25
040.073	32	45	24	STROHM 205-255 / TORNOS M15-R16-RR20-M25 / OCEA THF40
040.080	35	45	22	PETERMAN 2A-2AR-P16-P20
040.090	40	45	30	TORNOS M20-M25-M28 / BECHET 2568 / PETERMAN P25



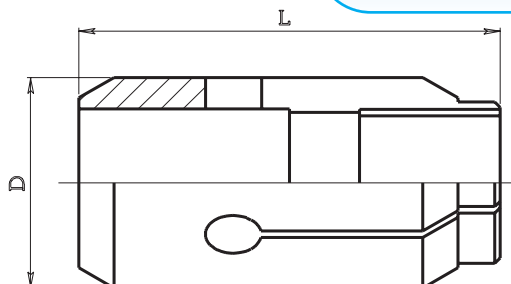


BUSSOLE GUIDA BARRA IN METALLO DURO REGISTRABILI (spinte)

HARD METAL ADJUSTABLE BUSHES (THRUST)

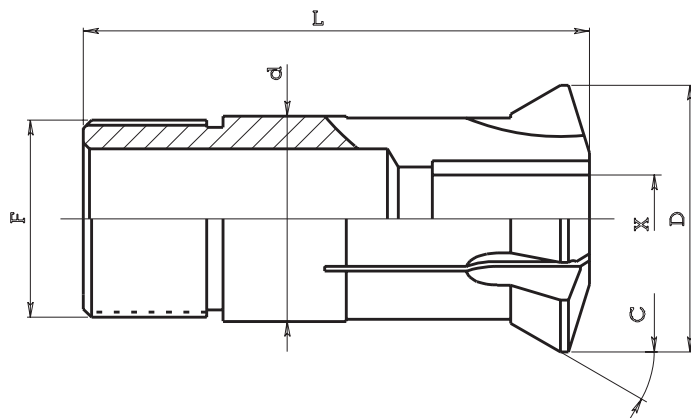
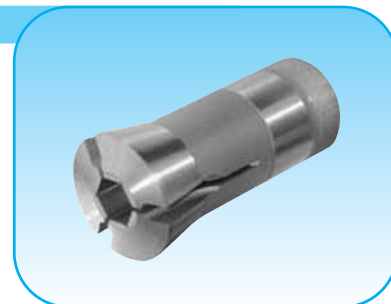


ART. (Code)	D	L	macchine (machines)
041.108	8	30	BECHLER A4-A7
041.116	16	40	BECHLER A7-A10-AE10
041.120	20	40	BECHLER A10
041.130	30	60	BECHLER B12-16-20
041.134	34	60	BECHLER B12-16-20
041.142	42	72	BECHLER C26
041.148	48	73	BECHLER C32

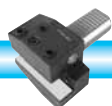


BUSSOLE GUIDA BARRA IN METALLO DURO REGISTRABILI (tirate)

HARD METAL ADJUSTABLE BUSHES (DRAW BACK)



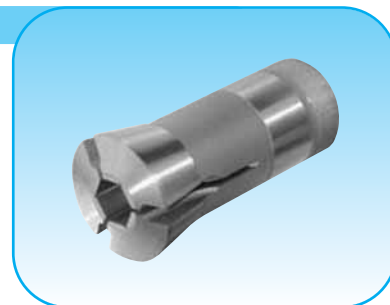
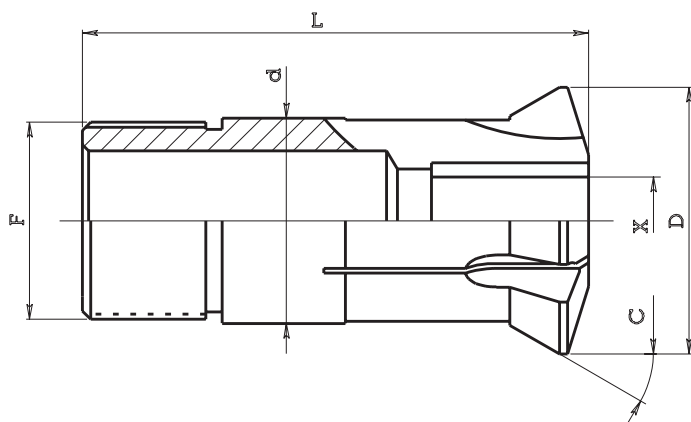
ART. (Code)	d	D	L	C	F	X max	macchine (machines)
042.010	7	9.5	30	16°	6x0.5	3.5	PETERMAN P3
042.030	9	11.5	25	30°	6x0.5 int.	4.5	PETERMAN P4
042.040	9	12.5	44	16°	8x0.75	4.5	TORNOS M4-T4-TV / PETERMAN P4 / CITIZEN L10-L10 WATCH
042.050	9	13	52	30°	9x0.7	4.5	TORNOS M4-T4-TV / BECHLER A-AR-AS4 / GAUTHIER 1H-GM75-GM17 STROHM M 45
042.060	10	14	57	36°	10x1	4.5	TORNOS M4
042.070	11	14.5	53	16°	10x0.75	7	TORNOS M7 / TSUGAMI NP-4W
042.080	12	15.5	50	16°	10x0.75	7	PETERMAN P7
042.090	12	15	52	30°	12x1	7	TORNOS M7-TV-MS1 / BECHLER A-AR-AS7 / PETERMAN NO1R-P7-M7 STROHM M-SJ75K M75 / TSUGAMI NP-4W / TORNOS-BECHLER ENC 16-162-164
042.100	13	16	41.5	15°	12.5x0.75	9	BECHLER AE7 - AE10 - AR10
042.110	13	17	68	5°	13x1	9	TORNOS M7 MAGIC
042.120	14	18	64	16°	13x0.75	9	TORNOS R10
042.130	16	19.8	58	16°	14x1	10	TORNOS MV-R10 / PETERMAN P7R / BECHET RMA7-RMA17 STAR SCN10DX-JNC10-RNC10 / CITIZEN G10-D10-L10-L101-F12 NOMURA I-CAM NN 1053A / TORNOS-BECHLER ENC 16-162-164
042.140	16	20	55	30°	16x1	10	GIGY GL16 / PETERMAN P7R / TORNOS MV
042.150	18	24	69	36°	18x1	10	TORNOS MS7-R10 MAGIC
042.160	18	22	60	30°	18x1	12.7	TORNOS M10-R10-R125-MS7 / GIGY GL16



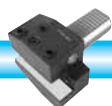


BUSSOLE GUIDA BARRA IN METALLO DURO REGISTRABILI (tirate)

HARD METAL ADJUSTABLE BUSHES (DRAW BACK)



ART. (Code)	d	D	L	C	F	X max	macchine (machines)
042.170	18	22	60	30°	16x1	12.7	TORNOS M10-R10-R125-MS7 / BECHLER A-AR-AS 10 / MANURHIN TRAMINER 13 STROHM M-SJ 125K-M 105-125 / CITIZEN D10-L10-L101-F12 TSUGAMI NT-NP 11 / TORNOS-BECHLER ENC 16-162-164
042.180	20	25	55	30°	20x1	13	BECHLER A-AR-AS 10 / PETERMAN 10-10HS-PS127 / GAUTHIER 1H-GM75-GM127 STROHM 75-105-125 / TORNOS-BECHLER ENC 16-162-164
042.200	21	24	57.4	12.5°	18x1	12	STAR VNC12-SNC15DX-JNC16-RNC16
042.210	22	29	68	16°	19x1	12	TORNOS M14-M15-R16-M17 / PETERMAN 10R-10HSR / STAR VNC 12 MANURHIN TRAMITER 16-20 KMX 20-26-220-226 / STROHM 205-255 TSUGAMI NT-NP16-NT-NP17-MARK11
042.212	22	29	68	16°	22x1		TRAUB TNL 16-16G / STROHM M-SJ 155K / NOMURA SN127-SN160-NN160C-D STAR SNC15DX-JNC16-RNC16-SST16-KIR16
042.220	24	30	61	30°	24x1	16	TORNOS M15-R16-M20-RR20 / TORNOS-BECHLER ENC 16-162-164 TOP100 PETERMAN P16 / CITIZEN E16-E16J-F16-G16-L16I-L16N-L16IV-L16VI-L16E TSUGAMI NT-NP16 NT-NP17 MARK11
042.230	25	30	71	30°	25x1	16	TORNOS M14-M15-R16-M20-RR20 / PETERMAN 10R-10HSR / GAUTHIER GM15 BECHET RMA 12-RMA I 12-RMA 15-RMA I 15
042.240	27	30	57	13°	24x1	16	BECHLER BE 16-20
042.245	28	34	81	16°	25x1	20	STAR KNC16-VNC20-KNC20 / CITIZEN L20E-L20VI / TRAUB TNL16
042.246	28	38	81	30°	25x1	20	MANURHIN TRAMINER 20-KMX20-26-220-226 / TSUGAMI S20-NT-NP20-MARK11
042.250	32	40	71	30°	32x1	21	TORNOS M20-RR20-M24-M25 / PETERMAN 2A-P16R-P20-2AR-P20R BECHET RMA19-RMA I 19 / GAUTHIER GM20 / CITIZEN D16-E20-F20 TSUGAMI NT-NP20
042.255	34	41	87.5	10°	34x1	25	MANURHIN KMX26-KMX226 / STAR SNC25DX-KJR25 / CITIZEN E25-F25 NOMURA NN20R-NN25R / TORNOS-BECHLER ENC 16-162-164
042.260	35	40	65	12°	34x1	26	BECHLER CR26
042.270	40	45	65	12°	38x1	26	BECHLER C26-32
042.280	40	48	71	30°	40x1	26	PETERMAN P25-P25R / BECHET RMA25-RMA I 25-RMA32-RMA I 32-TCN32 GAUTHIER GM20-GM25
042.290	40	48	65	30°	40x1	26	BECHLER B-BR12 B-BR16 B-BR20
042.300	40	48	72	30°	36x1	25	TORNOS-BECHLER ENC 262-264 TOP200 / GILDEMEISTER GAC 25L STROHM M205-255 SN25C
042.302	41	46	54	10°	38x1	32	TSUGAMI MORI BS 32
042.305	42	49	81	16°	40x1	32	STAR JNC25-KNC25-JNC32-KNC32-VNC32 / CITIZEN E32 TSUGAMI NT-NP32 NT-NP32 MARK11 / MIRABEL 321 MANURHIN
042.310	4315	48	65	12°	42x1	32	BECHLER CR 35
042.320	44	53	87	20°	40x1	32	TORNOS MR32
042.330	48	58	73	20°	48x1.25	32	TORNOS M25-M28-R28-MR32 / PETERMAN P25R
042.340	48	56	81	30°	48x1.25	32	BECHLER C-CR26 C-CR32

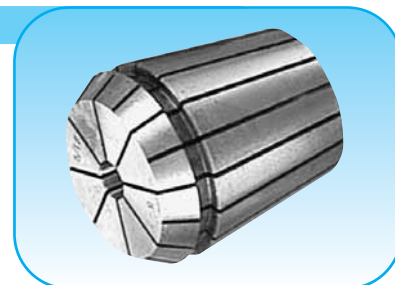
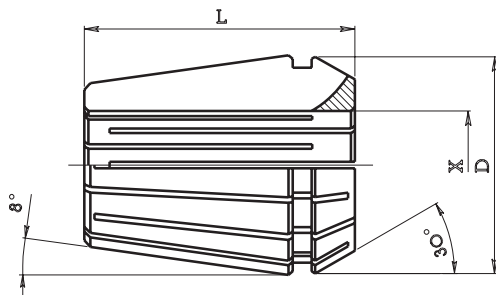




PINZE ERC AUTOESTRAIBILI Tipo 050

DIN 6499 B

ERC COLLETS



PINZE STANDARD (STANDARD COLLETS)

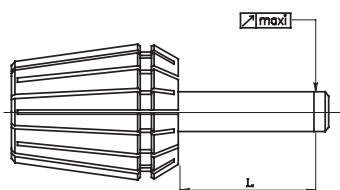
* Speciali (Special)

Code	Type			Bores min - max		Gripping Range	Collets for range
ART.	Tipo	D	L	X min	X max	Capacità serraggio	Pinze per serie
050.008	ERC 8	8.5	13.5	1.0	5.0	0.5	9
050.011	ERC 11	11.5	18	1.0	7.0	0.5	13
050.012	ERC 12	12	20	1.0	7.0	0.5	13
050.016	ERC 16	17	27	1.0	3.0	0.5	5
050.016	ERC 16	17	27	4.0	10.0	1.0	7
050.016*	ERC 16	17	22	11.0	12.0	1.0	2
050.020	ERC 20	21	31	1.0	3.0	0.5	5
050.020	ERC 20	21	31	4.0	13.0	1.0	10
050.020*	ERC 20	21	24	14.0	15.0	1.0	2
050.025	ERC 25	26	35	1.0	3.0	0.5	5
050.025	ERC 25	26	35	4.0	16.0	1.0	13
050.025*	ERC 25	26	26	17.0	20.0	1.0	4
050.032	ERC 32	33	40	2.5	3.0	0.5	2
050.032	ERC 32	33	40	4.0	20.0	1.0	17
050.032*	ERC 32	33	33	21.0	25.0	1.0	5
050.040	ERC 40	41	46	3.0	30.0	1.0	28
050.050	ERC 50	52	60	6.0	34.0	1.0	29

PINZE ALTA PRECISIONE (HIGH PRECISION COLLETS)

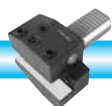
Code	Type			Bores min - max		Gripping Range	Collets for range
ART.	Tipo	D	L	X min	X max	Capacità serraggio	Pinze per serie
050.008P	ERC 8	8.5	13.5	1.0	5.0	0.5	9
050.011P	ERC 11	11.5	18	1.0	7.0	0.5	13
050.012P	ERC 12	12	20	1.0	7.0	0.5	13
050.016P	ERC 16	17	27	1.0	3.0	0.5	5
050.016P	ERC 16	17	27	4.0	10.0	1.0	7
050.020P	ERC 20	21	31	1.0	3.0	0.5	5
050.020P	ERC 20	21	31	4.0	13.0	1.0	10
050.025P	ERC 25	26	35	1.0	3.0	0.5	5
050.025P	ERC 25	26	35	4.0	16.0	1.0	13
050.032P	ERC 32	33	40	2.5	3.0	0.5	2
050.032P	ERC 32	33	40	4.0	20.0	1.0	17
050.040P	ERC 40	41	46	3.0	26.0	1.0	28

PROVA DI CONCENTRICITÀ
ROTATIONARY CONCENTRICITY TEST



(*) Valori validi solo per il diametro nominale delle pinze.
(* The tolerances are valid only for nominal diameter of the collets.

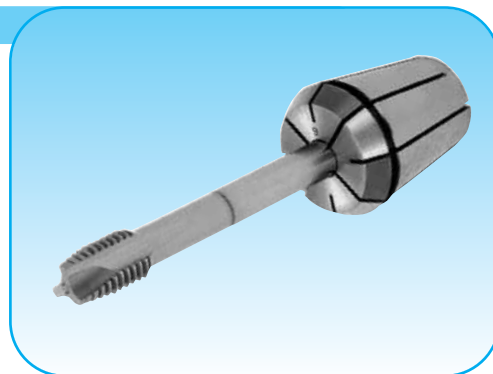
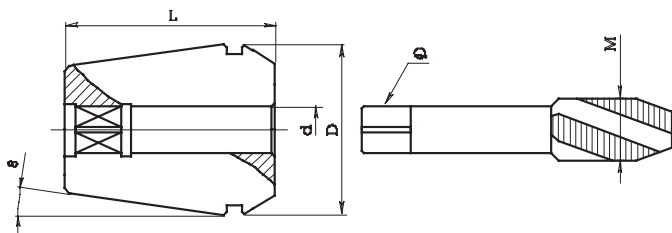
Alesaggio D (Bores)		L	Limite max di concentricità (*) (max concentricity limit)	
Min	Max		Pinze standard (Standard collets)	Pinze alta precisione (High precision collets)
1	1,6	6	0,015	0,010
1,6	3	10	0,015	0,010
3	7	16	0,015	0,010
7	10	25	0,015	0,010
10	18	40	0,020	0,015
18	26	50	0,020	0,015
26	40	60	0,020	0,015





PINZE ERC PORTAMASCHI CON QUADRO

TAPPING COLLETS WITH INTERNAL SQUARE



Tipo (type) ERC 16 D=21 L=31			
ART. (Code)	d	quadro Q (square)	M
050.016M D0350	3.5	2.7	M3
050.016M D0400	4	3	M3.5
050.016M D0450	4.5	3.4	M4
050.016M D0500	5	4	M4
050.016M D0550	5.5	4.3	M5
050.016M D0600	6	4.9	M5-6-8
050.016M D0630	6.3	5	M6-8
050.016M D0700	7	5.5	M10
050.016M D0800	8	6.2	M8

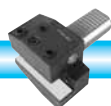
Tipo (type) ERC 20 D=21 L=31			
ART. (Code)	d	quadro Q (square)	M
050.020M D0350	3.5	2.7	M3
050.020M D0400	4	3	M3.5
050.020M D0450	4.5	3.4	M4
050.020M D0500	5	4	M4
050.020M D0550	5.5	4.3	M5
050.020M D0600	6	4.9	M5-6-8
050.020M D0630	6.3	5	M6-8
050.020M D0700	7	5.5	M10
050.020M D0800	8	6.2	M8
050.020M D0900	9	7	M12
050.020M D1000	10	8	M10

Tipo (type) ERC 25 D=21 L=31			
ART. (Code)	d	quadro Q (square)	M
050.025M D0350	3.5	2.7	M3
050.025M D0400	4	3	M3.5
050.025M D0450	4.5	3.4	M4
050.025M D0500	5	4	M4
050.025M D0550	5.5	4.3	M5
050.025M D0600	6	4.9	M5-6-8
050.025M D0630	6.3	5	M6-8
050.025M D0700	7	5.5	M10
050.025M D0800	8	6.2	M8
050.025M D0900	9	7	M12
050.025M D1000	10	8	M10
050.025M D1100	11	9	M14
050.025M D1120	11.2	9	M14
050.025M D1200	12	9	M16

Tipo (type) ERC 32 D=33 L=40			
ART. (Code)	d	quadro Q (square)	M
050.032M D0350	3.5	2.7	M3
050.032M D0400	4	3	M3.5
050.032M D0450	4.5	3.4	M4
050.032M D0500	5	4	M4
050.032M D0550	5.5	4.3	M5
050.032M D0600	6	4.9	M5-6-8
050.032M D0630	6.3	5	M6-8
050.032M D0700	7	5.5	M10
050.032M D0800	8	6.2	M8
050.032M D0900	9	7	M12
050.032M D1000	10	8	M10
050.032M D1100	11	9	M14
050.032M D1120	11.2	9	M14
050.032M D1200	12	9	M16
050.032M D1250	12.5	10	M16
050.032M D1400	14	11	M18
050.032M D1600	16	12	M20

Tipo (type) ERC 40 D=41 L=46			
ART. (Code)	d	quadro Q (square)	M
050.040M D0600	6	4.9	M5-6-8
050.040M D0700	7	5.5	M10
050.040M D0800	8	6.2	M8
050.040M D0900	9	7	M12
050.040M D1000	10	8	M10
050.040M D1100	11	9	M14
050.040M D1200	12	9	M16
050.040M D1400	14	11	M18
050.040M D1600	16	12	M20
050.040M D1800	18	14.5	M24
050.040M D2000	20	16	M27

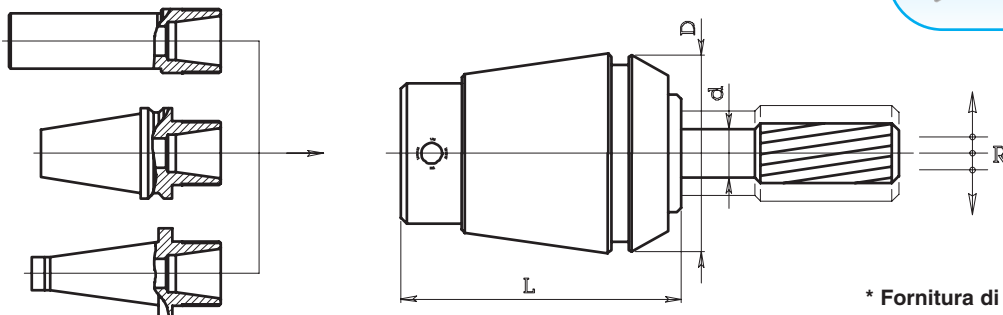
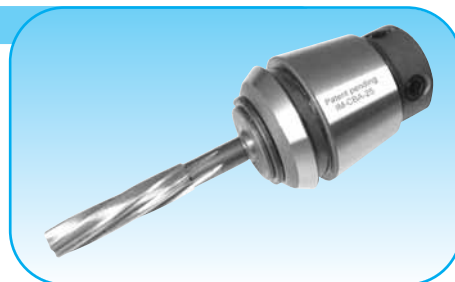
Tipo (type) ERC 50 D=52 L=60			
ART. (Code)	d	quadro Q (square)	M
050.050M D0800	8	6.2	M8
050.050M D0900	9	7	M12
050.050M D1000	10	8	M10
050.050M D1100	11	9	M14
050.050M D1200	12	9	M16
050.050M D1400	14	11	M18
050.050M D1600	16	12	M20
050.050M D1800	18	14.5	M24
050.050M D2000	20	16	M27
050.050M D2200	22	18	M30
050.050M D2500	25	20	M33
050.050M D2800	28	22	M36
050.050M D3200	32	24	M39-42





PINZE CBA PER ALESATURA E MASCHIATURA RIGIDA DIN 6499 B
REAMER AND SYNCHRONIZED TAP COLLETS

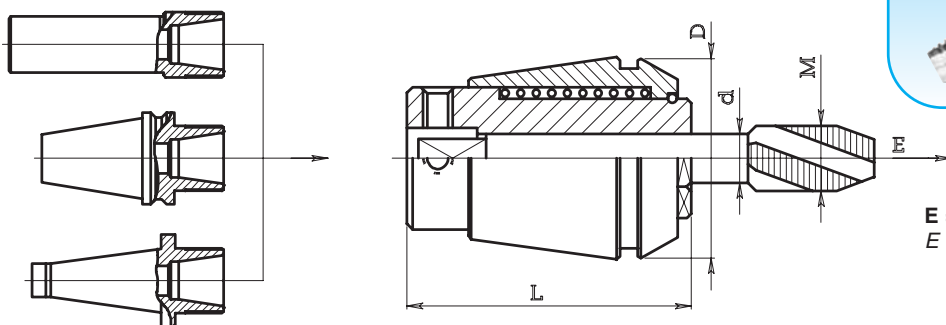
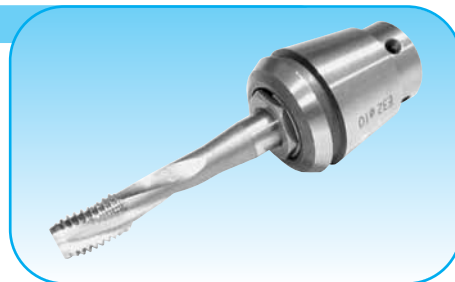
BREVETTATA
PATENTED



* Fornitura di altri alesaggi su richiesta
* Other bores providing on request

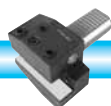
Code	Seat				bores *	
ART.	sede	D	L	alesaggi d *		R
IM-CBA-16	ERC 16	17	29	2 - 3 - 4 - 5 - 6 - 7		0.5
IM-CBA-20	ERC 20	21	32	3 - 4 - 5 - 6 - 7 - 8		0.5
IM-CBA-25	ERC 25	26	35	3 - 4 - 5 - 6 - 7 - 8 - 9 - 10		0.5
IM-CBA-32	ERC 32	33	44	4 - 5 - 6 - 7 - 8 - 9 - 10 - 11 - 12 - 13 - 14		0.5
IM-CBA-40	ERC 40	41	56	5 - 6 - 7 - 8 - 9 - 10 - 11 - 12 - 13 - 14 - 15 - 16		0.5

PINZE PORTAMASCHI CON ESTRAZIONE Tipo ZM 050 DIN 6499 B
TAP COLLETS WITH EXTENSION



E = corsa di estrazione
E = Extension stroke

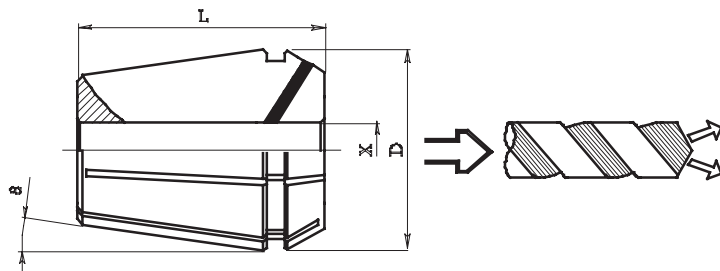
Code	Seat				Tap capacity	bores	
ART.	sede	D	L	capacità maschiatura M	alesaggi d		E
050.016 ZM	ERC 16	17	27	M1-M6	1.4 - 1.6 - 1.8 - 2 - 2.2 - 2.5 - 2.8 - 3 - 3.15 - 3.5 - 3.55 - 4 - 4.5 - 5 - 5.5 - 6		7
050.020 ZM	ERC 20	21	31	M1-M8	2.2 - 2.5 - 2.8 - 3 - 3.15 - 3.5 - 3.55 - 4 - 4.5 - 5 - 5.5 - 5.6 - 6 - 6.2 - 7 - 8		7
050.025 ZM	ERC 25	26	34	M3.5-M10 (M12)	2.5 - 2.8 - 3 - 3.15 - 3.5 - 3.55 - 4 - 4.5 - 5 - 5.5 - 5.6 - 6 - 6.2 - 6.3 - 7 - 8 - 8.5 - 9 - 10		8
050.032 ZM	ERC 32	33	43	M4-M12 (M16)	4.5 - 5 - 5.5 - 5.6 - 6 - 6.2 - 6.3 - 7 - 8 - 8.5 - 9 - 10 - 10.5 - 11 - 11.2 - 12 - 12.5		10
050.040 ZM	ERC 40	41	54	M6-M16 (M20)	6 - 6.2 - 6.3 - 7 - 8 - 8.5 - 9 - 10 - 10.5 - 11 - 11.2 - 12 - 12.5 - 14 - 15 - 16		13





PINZE ERC CON TENUTA PER REFRIGERAZIONE INTERNA DIN 6499

SEALED COLLETS FOR COOLANT THROUGH TOOLS



MAX: 70 bar - 1000 p.s.i.



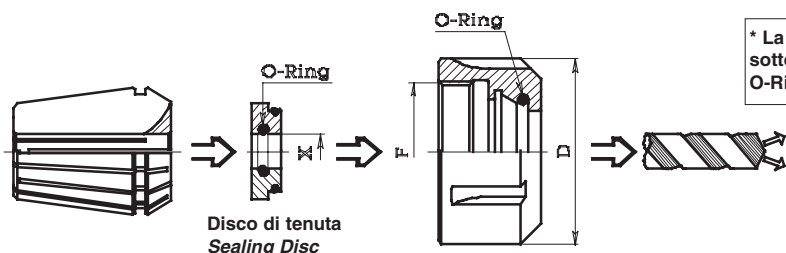
Gli inserti in neoprene, inseriti nei tagli della pinza, consentono l'uscita del refrigerante negli utensili con fori di lubrificazione.
The rubber seal in 30° taper, contain and direct the coolant only through the shank of cutting tools with holes.

Code	Type			Bores min - max*		Colles for range	
ART.	Tipo	D	L	X min*	X max*	progressione	Pinze per serie
050.011R	ERC 11	11.5	18	3	7	0.5	9
050.016R	ERC 16	17	27	3	10	0.5	15
050.020R	ERC 20	21	31	3	13	0.5	21
050.025R	ERC 25	26	35	3,5	16	0.5	27
050.032R	ERC 32	33	40	4	20	0.5	35
050.040R	ERC 40	41	46	4	26	0.5	45

* Le pinze ERC 050-R bloccano solo il diametro nominale.
The ERC 050-R collets hold the nominal size only.

GHIERE ERC CON TENUTA PER REFRIGERAZIONE INTERNA DIN 6499

SEALED NUTS FOR COOLANT THROUGH TOOLS



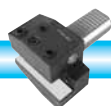
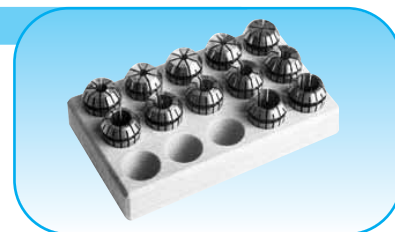
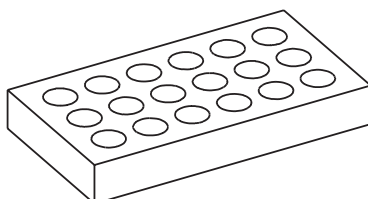
* La capacità di tenuta garantita dal "O-Ring" è pari a 0,5 mm al di sotto del diametro nominale "X".
O-Ring seal contain the coolant 0,5 mm under the "X" diameter.

Code nut	Type		Thread	Wrench	Code Sealing Disc	Bores min - max*		progression
ART. Ghiera	Tipo	D	F	Chiave	ART. Disco di tenuta	X min*	X max*	progressione
052.216R	ERC 16	28	22x1.5	053.216	052.216RD	4	10	0.5
052.220R	ERC 20	34	25x1.5	053.220	052.220RD	4	13	0.5
052.325R	ERC 25	42	32x1.5	053.325	052.325RD	3.5	16	0.5
052.332R	ERC 32	50	40x1.5	053.332	052.332RD	3.5	20	0.5
052.340R	ERC 40	63	50x1.5	053.340	052.340RD	4	26	0.5

CONTENITORI PER PINZE ERC

ERC COLLETS RACKS

Code	Collet	collets seats
ART.	Pinza	n. sedi
050.108 B	ERC 8	10
050.111 B	ERC 11	14
050.112 B	ERC 12	14
050.116 B	ERC 16	15
050.120 B	ERC 20	15
050.125 B	ERC 25	20
050.132 B	ERC 32	20
050.140 B	ERC 40	30





GHIERE DI SERRAGGIO PER PINZE Tipo 052

CLAMPING NUTS FOR ERC COLLETS

GHIERE MINI (MINI CLAMPING NUTS) Fig. 1

Code	Type			Thread
ART.	Tipo	D	H	F
052.108	ERC 8	12	11	10x0.75
052.111	ERC 11	16	11	13x0.75
052.116	ERC 16	22	17	19x1
052.120	ERC 20	28	19	24x1
052.125	ERC 25	35	20	30x1

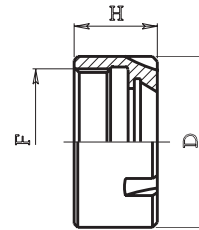


Fig. 1



GHIERE ESAGONALI (HEXAGONAL CLAMPING NUTS) Fig. 2

Code	Type			Thread
ART.	Tipo	D	H	F
052.211	ERC 11	19	11	14x0.75
052.216	ERC 16	28	17	22x1.5
052.220	ERC 20	34	19	25x1.5

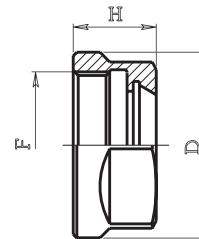
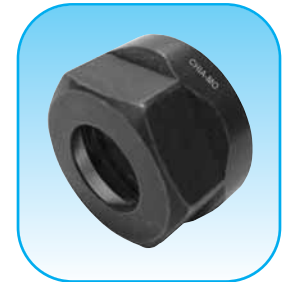


Fig. 2



GHIERE STANDARD (STANDARD CLAMPING NUTS) Fig. 3

Code	Type			Thread
ART.	Tipo	D	H	F
052.316	ERC 16	32	17.5	22x1.5
052.320	ERC 20	35	19	25x1.5
052.325	ERC 25	42	20	32x1.5
052.332	ERC 32	50	22	40x1.5
052.340	ERC 40	63	25	50x1.5
052.350	ERC 50	78	35	64x2

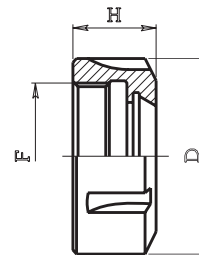


Fig. 3



GHIERE FILETTO ESTERNO (EXTERNAL THREAD NUTS) Fig. 4

Code	Type			Thread
ART.	Tipo	D	H	F
052.411	ERC 11	...	6	18x1
052.411 B*	ERC 11	...	6	18x1
052.416	ERC 16	...	8	24x1
052.420	ERC 20	...	11	28x1.5
052.425	ERC 25	...	12.5	32x1.5
052.432	ERC 32	...	14	40x1.5
052.432 B*	ERC 32	...	14	40x1.5

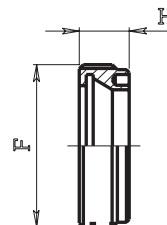
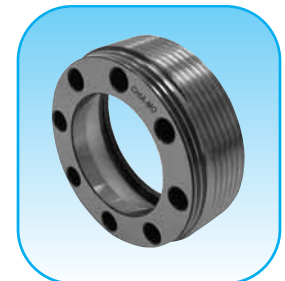


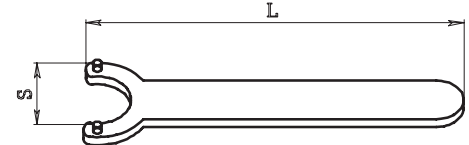
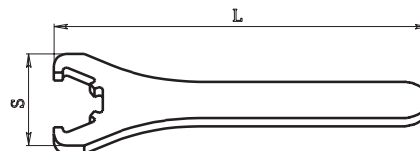
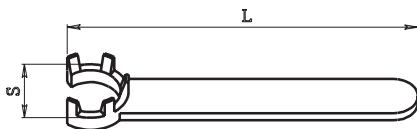
Fig. 4



* Per chiave esagonale - * For hexagonal wrenches

CHIAVI PER GHIERE Tipo 053

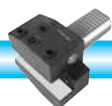
WRENCHES FOR CLAMPING NUTS

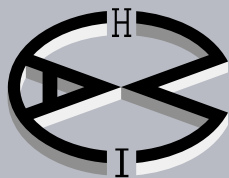
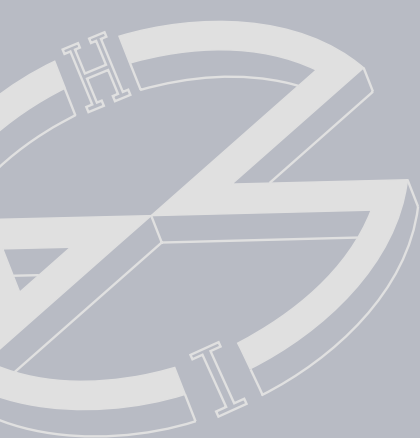


Code			For Nut Code
ART.	S	L	per ghiera art.
053.108	12	80	052.108
053.111	16	96	052.111
053.116	22	118	052.116
053.120	28	130	052.120
053.125	35	132	052.125

Code			For Nut Code
ART.	S	L	per ghiera art.
053.316	50	160	052.316
053.320	57	180	052.320
053.325	65	210	052.325
053.332	75	250	052.332
053.340	90	290	052.340
053.350	110	350	052.350

Code			For Nut Code
ART.	S	L	per ghiera art.
053.420	20.5	160	052.420
053.425	23.5	180	052.425
053.432	32	200	052.432





CHIA-MO

ITALY

DOVE SIAMO WHERE WE ARE



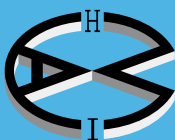
CHIA-MO

Via Caduti di Sabbiuno, 12

40011 Anzola dell'Emilia (Bologna) Italy

Tel. +39 051 734153 - Fax +39 051 734958

info@chiamo.it - www.chiamo.it



CHIA-MO
ITALY



Via Caduti di Sabbiuono, 12
40011 Anzola dell'Emilia (Bologna) Italy
Tel. +39 051 734153 - Fax +39 051 734958
info@chiamo.it - www.chiamo.it

