



CATALOGO PRODOTTI

PRODUCTS CATALOGUE



PORTA UTENSILI TORRETTA TURRET TOOL HOLDERS



**PORTA UTENSILI PER TORRETTA; PORTA UTENSILI
COMBINATI SEMPLICI E DOPPI; PORTA GODRONI;
PORTA UTENSILI PER RECESSI; PORTA UTENSILI
REGISTRABILI.**



**TURRET TOOL HOLDERS; TURN AND DRILL HOLDERS;
KNURL HOLDERS; RECESSING TOOL HOLDERS;
ADJUSTABLE TOOL HOLDERS.**



CHIA-MO SRL
VIA CADUTI DI SABBIONO, 12
40011 ANZOLA DELL'EMILIA
BOLOGNA ITALY

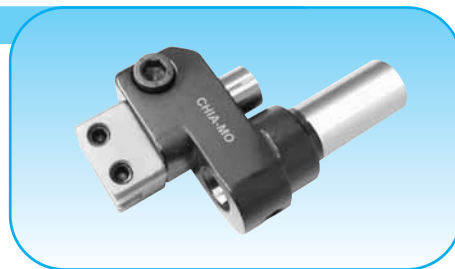
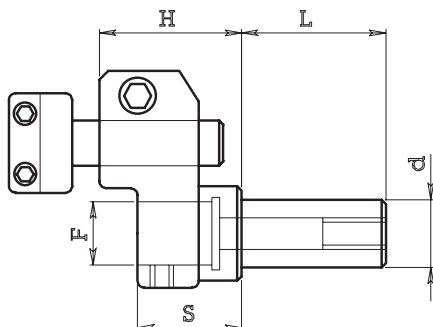
TEL +39 051734153
FAX +39 051734958

WWW.CHIAMO.IT
INFO@CHIAMO.IT



PORTA UTENSILE COMBINATO SEMPLICE RIBASSATO Tipo 108

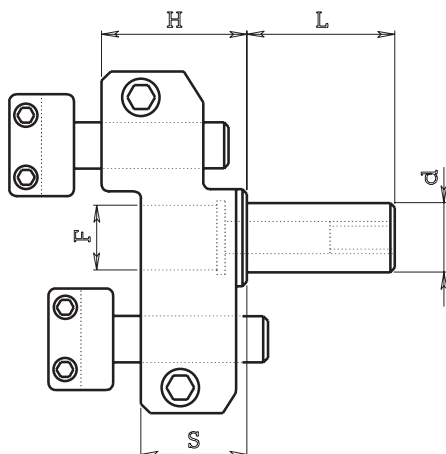
TURN AND DRILL HOLDER



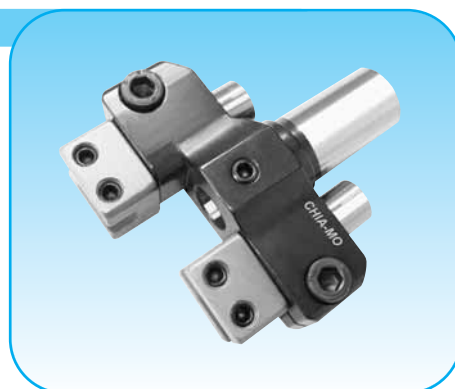
ART. (Code)	d	F	H	S	L	E
108.115	15.875	12	32	24	32	12
108.116	16	12	32	24	32	12
108.119	19.05	12	32	24	32	12

PORTA UTENSILE COMBINATO DOPPIO RIBASSATO Tipo 109

TURN AND DRILL HOLDER



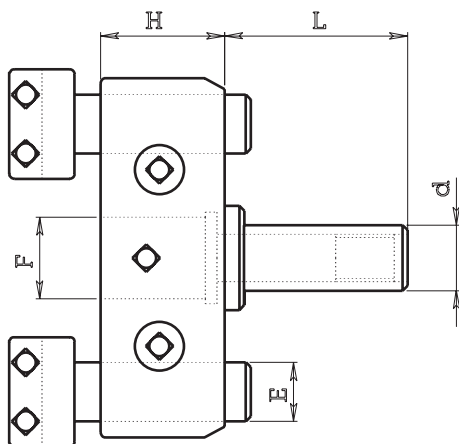
A richiesta (on request)



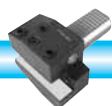
ART. (Code)	d	F	H	S	L	E
109.115	15.875	12	32	26	32	12
109.116	16	12	32	26	32	12
109.119	19.05	12	32	26	32	12

PORTA UTENSILE COMBINATO DOPPIO Tipo 110

TURN AND DRILL HOLDER



ART. (Code)	d	F	H	L	E
110.219	19.05	15	26	46	15
110.220	20	15	26	46	15
110.322	22	25	44	50	18
110.325	25	25	44	50	18
110.326	25.40	25	44	50	18
110.330	30	25	38	56	18
110.331	31.75	25	38	56	18
110.332	32	25	38	56	18



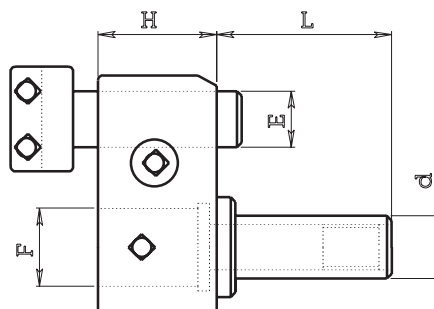


PORTA UTENSILE COMBINATO SEMPLICE Tipo 112

TURN AND DRILL HOLDER



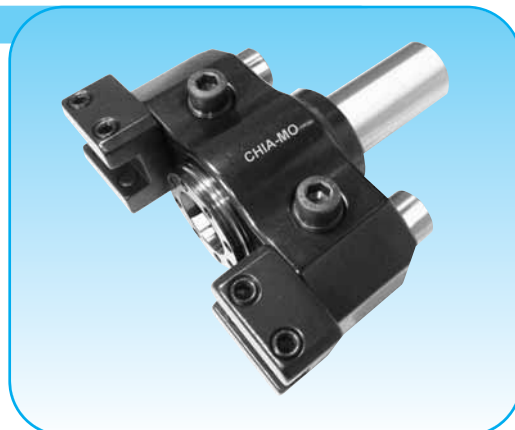
Code					
ART.	d	F	H	L	E
112.115	15.875	12	22	32	12
112.116	16	12	22	32	12
112.119	19.05	12	22	32	12
112.219	19.05	15	26	46	15
112.220	20	15	26	46	15
112.322	22	25	36	50	18
112.325	25	25	36	50	18
112.326	25.40	25	36	50	18
112.330	30	25	36	50	18
112.331	31.75	25	36	50	18
112.332	32	25	36	50	18



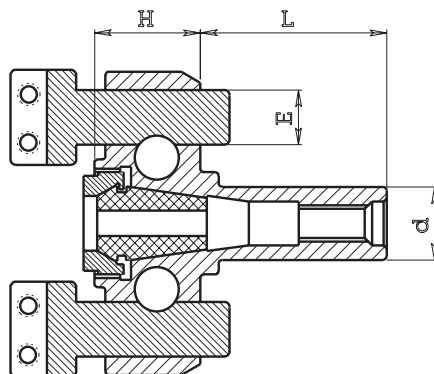
PORTA UTENSILE COMBINATO DOPPIO Tipo 114 CON PINZA

TURN AND DRILL HOLDER WITH COLLET

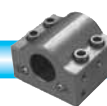
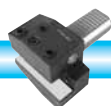
Pinze DIN 6499/B
Collets DIN 6499/B



Code					Collet	Code collet
ART.	d	H	L	E	pinza	art. pinza
114.115*	15.875	28	32	12	ERC 16	050.016
114.116*	16	28	32	12	ERC 16	050.016
114.119*	19.05	28	32	12	ERC 16	050.016
114.219	19.05	34	46	15	ERC 20	050.020
114.220	20	34	46	15	ERC 20	050.020
114.222	22	34	46	15	ERC 20	050.020
114.322	22	47	50	18	ERC 32	050.032
114.325	25	47	50	18	ERC 32	050.032
114.326	25.40	47	50	18	ERC 32	050.032
114.330	30	47	50	18	ERC 32	050.032
114.331	31.75	47	50	18	ERC 32	050.032
114.332	32	47	50	18	ERC 32	050.032



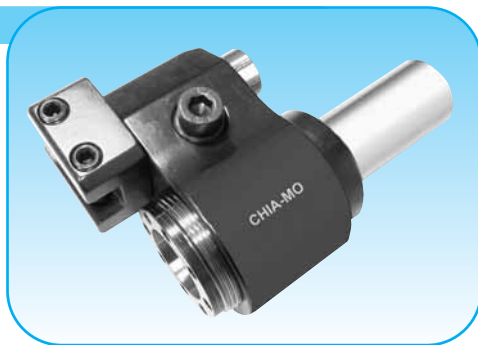
* = A richiesta (on request)



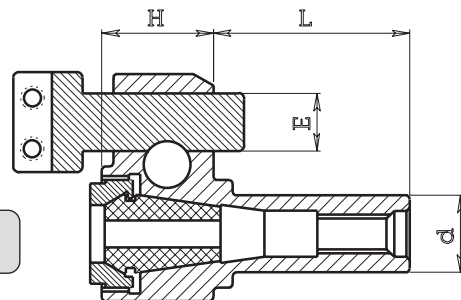


PORTA UTENSILE COMBINATO SEMPLICE Tipo 116 CON PINZA

TURN AND DRILL HOLDER WITH COLLET



Code					Collet	Code collet
ART.	d	H	L	E	pinza	art. pinza
116.115*	15.875	28	32	12	ERC 16	050.016
116.116*	16	28	32	12	ERC 16	050.016
116.119*	19.05	28	32	12	ERC 16	050.016
116.219	19.05	34	45	15	ERC 20	050.020
116.220	20	34	45	15	ERC 20	050.020
116.222	22	34	45	15	ERC 20	050.020
116.322	22	47	50	18	ERC 32	050.032
116.325	25	47	50	18	ERC 32	050.032
116.326	25.40	47	50	18	ERC 32	050.032
116.330	30	47	50	18	ERC 32	050.032
116.331	31.75	47	50	18	ERC 32	050.032
116.332	32	47	50	18	ERC 32	050.032
116.426	25.40	47	50	18	ERC 25	050.025



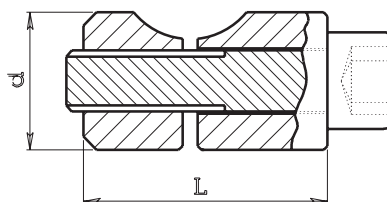
Pinze DIN 6499/B
Collets DIN 6499/B

* = A richiesta (on request)

NOTTOLINI DI BLOCCAGGIO Tipo 244

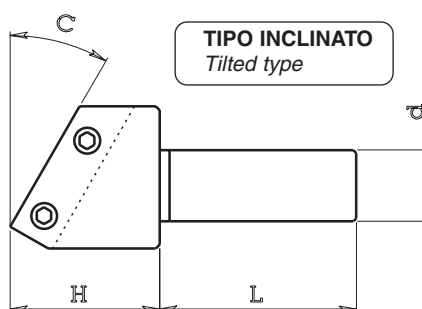
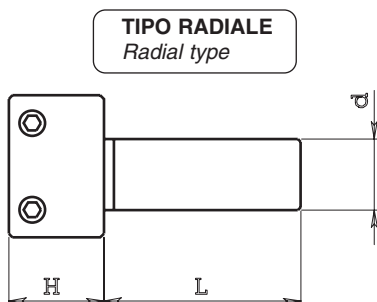
INTERLOCKING BUSHES

Code			for toolholder
ART.	d	L	art. portautensile
244.201	12	26	110.2 - 112.2 - 114.2 - 116.2
244.301	15	36	110.3 - 112.3 - 114.3 - 116.3



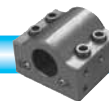
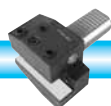
SUPPORTINI FISSI Tipo 120

FIXED TOOLHOLDERS



Code			
ART.	d	L	H
120.101	12	32	14
120.102	12	40	14
120.201	15	42	18
120.202	15	60	18
120.301	18	50	20
120.302	18	75	20

right hand cut off					left hand cut off
ART. taglio dx	d	L	H	C	ART. taglio sx
120.211	15	42	18	8°	120.711
120.212	15	60	18	8°	120.712
120.231	15	42	29	30°	120.731
120.232	15	60	29	30°	120.732
120.311	18	50	25	8°	120.811
120.312	18	75	25	8°	120.812
120.331	18	50	32	30°	120.831
120.332	18	75	32	30°	120.832



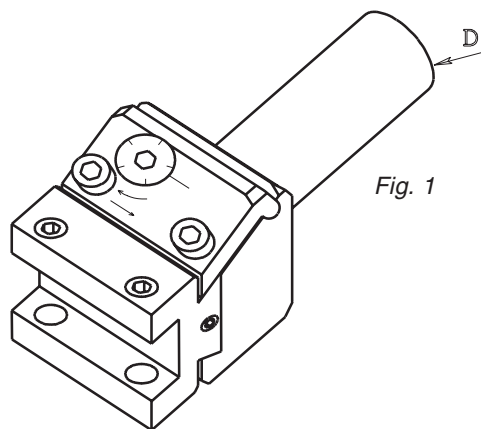


SUPPORTINI REGISTRABILI Tipo 122 - 123 - 124
ADJUSTABLE TOOLHOLDERS

SUPPORTINO REGISTRABILE PORTA BARRETTA
ADJUSTABLE TOOLHOLDER

Code		length of shaft	total length	cut off
ART.	D	Lunghezza stelo	Lunghezza totale	Taglio
124.201	15	42	82	Dx - Sx
124.202	15	60	100	Dx - Sx
124.301	18	50	90	Dx - Sx
124.302	18	75	115	Dx - Sx

Fig. 1



SUPPORTINO REGISTRABILE
CON UTENSILE PORTA INSERTO

ADJUSTABLE TOOLHOLDER WITH INSERT HOLDER

Code		length of shaft	total length	cut off
ART.	D	Lunghezza stelo	Lunghezza totale	Taglio
122.201 D	15	42	82	Dx
122.202 D	15	60	100	Dx
122.301 D	18	50	90	Dx
122.302 D	18	75	115	Dx
122.201 S	15	42	82	Sx
122.202 S	15	60	100	Sx
122.301 S	18	50	90	Sx
122.302 S	18	75	115	Sx

Fig. 2

Con inserto trapezoidale
a 90 gradi
With trapezoidal insert 90°

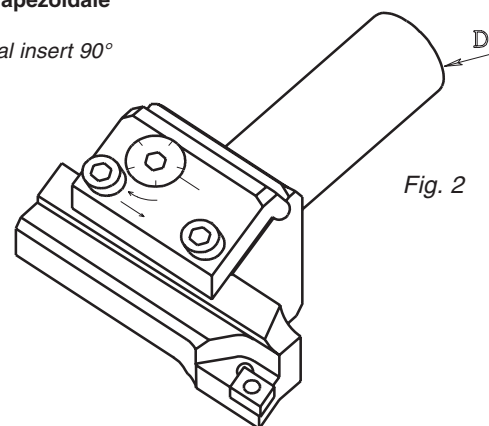


Fig. 2

ART.	D	Lunghezza stelo	Lunghezza totale	Taglio
123.201 D	15	42	82	Dx
123.202 D	15	60	100	Dx
123.301 D	18	50	90	Dx
123.302 D	18	75	115	Dx
123.201 S	15	42	82	Sx
123.202 S	15	60	100	Sx
123.301 S	18	50	90	Sx
123.302 S	18	75	115	Sx

Con inserto trapezoidale
a 45 gradi
With trapezoidal insert 45°

(N.B.1)
L'utensile rappresentato in
figura è per taglio sinistro
Tool in figure is left hand

PORTA BARENO REGISTRABILE Tipo 140
ADJUSTABLE BORING TOOLHOLDER

Code		length of shaft	total length	ø bore
ART.	D	Lunghezza stelo	Lunghezza totale	Foro
140.115	15.875	32	78.5	12
140.116	16	32	78.5	12
140.119	19.05	46	92.5	12
140.120	20	46	92.5	12

Fig. 3

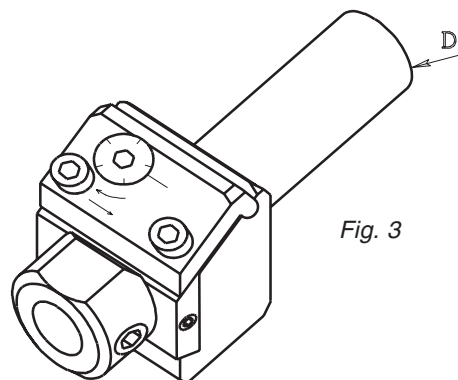
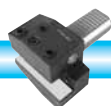


Fig. 3





SUPPORTINI REGISTRABILI Tipo 122 - 123 - 124 - 140

ADJUSTABLE TOOLHOLDER - ADJUSTABLE BORING TOOLHOLDER

PARTI INTERCAMBIABILI E DI RICAMBIO

INTERCHANGEABLE PARTS

I supportini registrabili Tipo 122-123-124 ed i porta bareni registrabili Tipo 140 sono intercambiabili.

Su di uno stesso stelo di supporto (Fig. 1), che contiene il meccanismo di movimento, si possono montare e smontare i vari tipi di utensile (Fig. 2-3-4-5).

Adjustable toolholders Type 122-123-124 and adjustable boring toolholders are interchangeable. Any shaft can be assembled with many tool type (fig. 2-3-4-5).

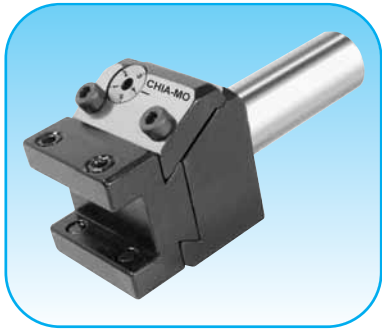
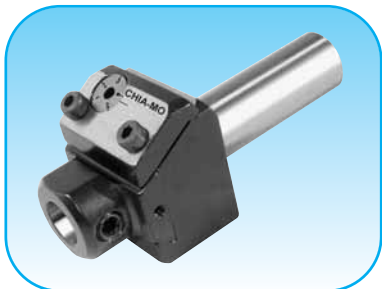
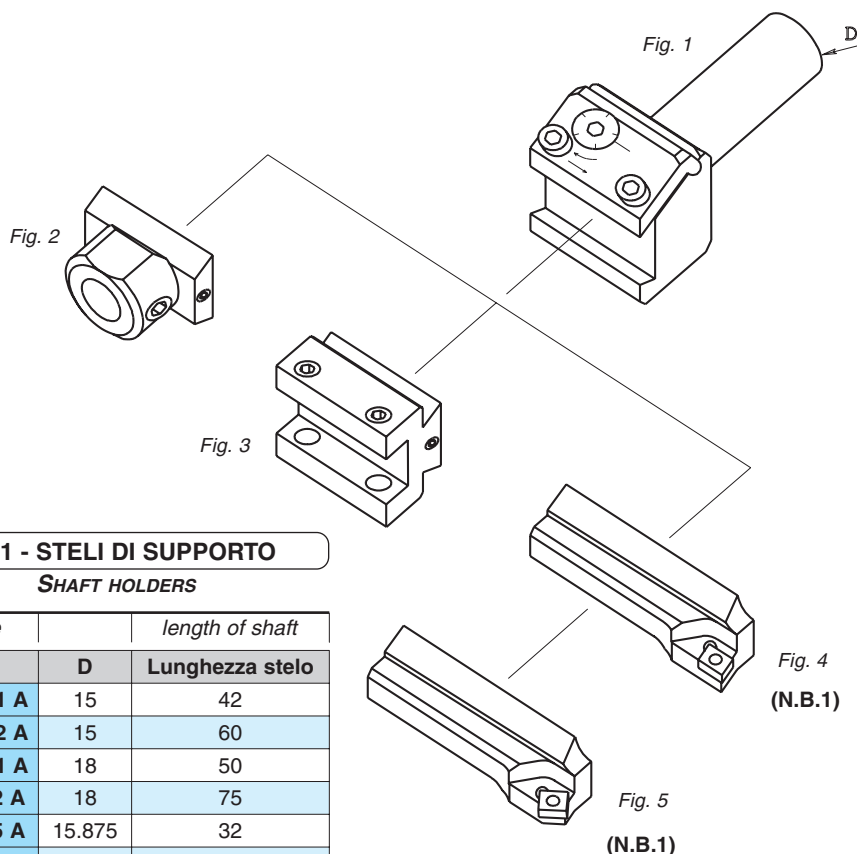


Fig. 1 - STELI DI SUPPORTO

SHAFT HOLDERS

Code		length of shaft
ART.	D	Lunghezza stelo
124.201 A	15	42
124.202 A	15	60
124.301 A	18	50
124.302 A	18	75
140.115 A	15.875	32
140.116 A	16	32
140.119 A	19.05	46
140.120 A	20	46

Fig. 4
(N.B.1)

Fig. 5
(N.B.1)

(N.B.1)

L'utensile rappresentato in figura è per taglio sinistro
Tool in figure is left hand

Fig. 2 - PORTA BARENO Art. 140.100 B

BORING TOOLHOLDER

**Fig. 3 - PORTA BARRETTA Art. 124.201 B
PER BARRETTA 8x8**

TOOLHOLDER FOR TOOL 8x8

Fig. 4 - UTENSILE PORTA INSERTO A 90°

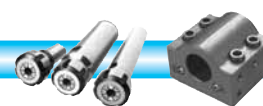
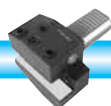
INSERT TOOLHOLDER 90°

Code	cut off	insert
ART.	Taglio	Inserto
122.001 D	Destro	CCMT
122.001 S	Sinistro	CCMT

Fig. 5 - UTENSILE PORTA INSERTO A 45°

INSERT TOOLHOLDER 45°

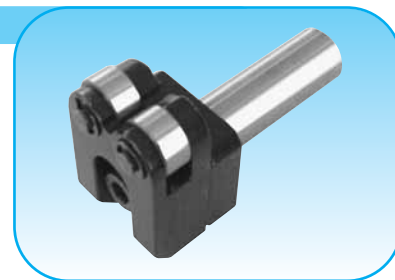
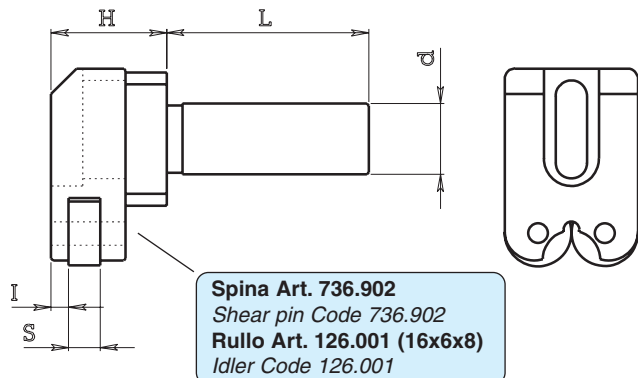
Code	cut off	insert
ART.	Taglio	Inserto
123.001 D	Destro	CCMT
123.001 S	Sinistro	CCMT





SUPPORTINI PORTA RULLI Tipo 126

IDLER TOOLHOLDERS



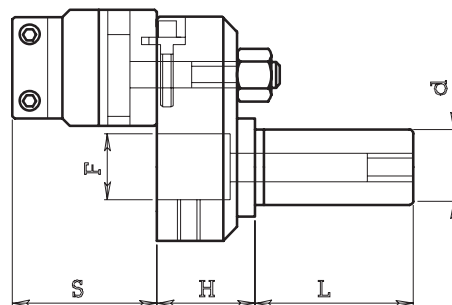
Code						bar diameter	
ART.	d	H	L	I	S	capacità di guida barra	
						min	max
126.201	15	27	42	4	8	3	30
126.301	18	29	52	4	8	3	30

PORTA UTENSILI REGISTRABILI Tipo 130

ADJUSTABLE TOOLHOLDERS

A richiesta (on request)

Code								
ART.	d	S	H	L	F			
130.219	19.05	30	26	46	15			
130.220	20	30	26	46	15			
130.322	22	38	38	50	25			
130.325	25	38	38	50	25			
130.326	25.40	38	38	50	25			
130.330	30	38	38	50	25			
130.331	31.75	38	38	50	25			
130.332	32	38	38	50	25			

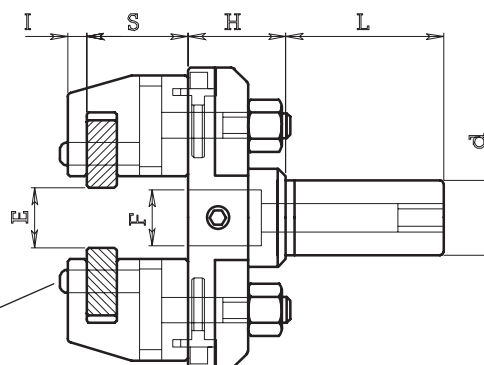


PORTA UTENSILI PORTA GODRONI Tipo 136

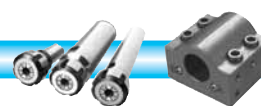
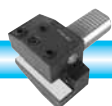
KNURL HOLDERS

Code								
ART.	d	S	H	I	L	F	E min	E max
136.219	19.05	28	28	5	42	15	5	26
136.220	20	28	28	5	42	15	5	26
136.322	22	34	35	6	50	25	6	56
136.325	25	34	35	6	50	25	6	56
136.326	25.40	34	35	6	50	25	6	56
136.330	30	34	35	6	50	25	6	56
136.331	31.75	34	35	6	50	25	6	56
136.332	32	34	35	6	50	25	6	56

Per godroni diametro esterno 20 mm, foro 6 mm, spessore 8 mm
For 20 mm diameter, 6 mm bore, 8 mm length knurls



Spina Art. 736.904
Shear pin Code 736.904





PORTA BARENO REGISTRABILE Tipo 140
ADJUSTABLE BORING TOOLHOLDER

Fig. 1

Code					
ART.	d	F	H	L	R
140.115	15.875	12	46.5	32	10
140.116	16	12	46.5	32	10
140.119	19.05	12	46.5	46	10
140.120	20	12	46.5	46	10

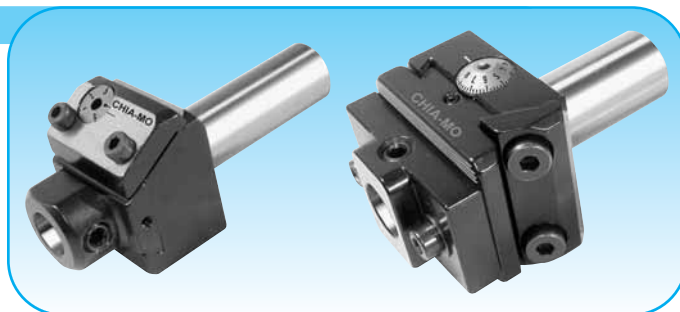


Fig. 2

Code					
ART.	d	F	H	L	R
140.219	19.05	15	54	50	18
140.220	20	15	54	50	18
140.225	25	15	54	50	18
140.226	25.40	15	54	50	18
140.319	19.05	18	54	50	18
140.320	20	18	54	50	18
140.325	25	18	54	50	18
140.326	25.40	18	54	50	18

R = Corsa di registrazione
R = adjustable stroke

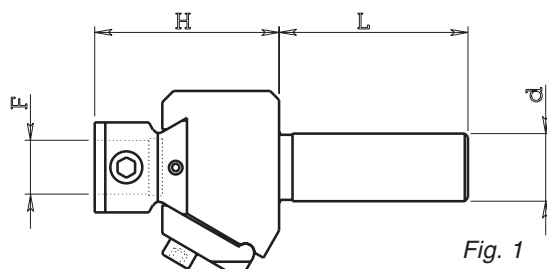


Fig. 1

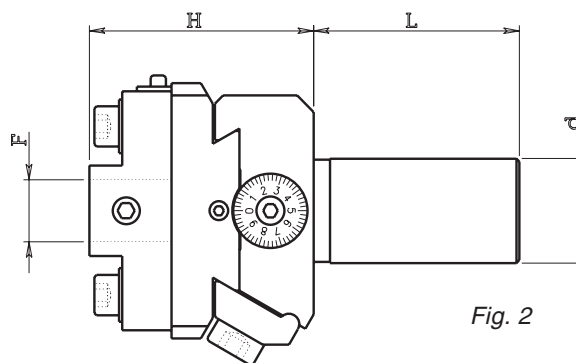
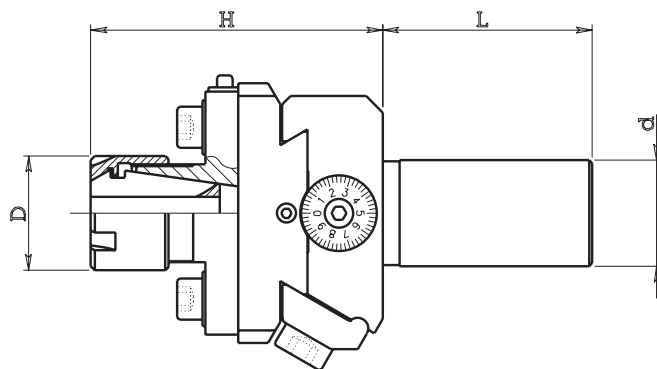


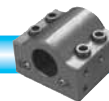
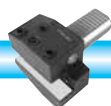
Fig. 2

PORTA BARENO REGISTRABILE Tipo 140 CON PINZA
ADJUSTABLE BORING TOOLHOLDER WITH COLLET

Code					collet	collet code	collet bore	
ART.	d	D	H	L	pinza	art. pinza	capacità pinza	
							min	max
140.219B	19.05	22	67	50	ERC 16	050.016	1	10
140.220B	20	22	67	50	ERC 16	050.016	1	10
140.225B	25	22	67	50	ERC 16	050.016	1	10
140.226B	25.40	22	67	50	ERC 16	050.016	1	10
140.219C	19.05	28	70	50	ERC 20	050.020	1	13
140.220C	20	28	70	50	ERC 20	050.020	1	13
140.325C	25	28	70	50	ERC 20	050.020	1	13
140.326C	25.40	28	70	50	ERC 20	050.020	1	13
140.319D	19.05	35	75	50	ERC 25	050.025	1	16
140.320D	20	35	75	50	ERC 25	050.025	1	16
140.325D	25	35	75	50	ERC 25	050.025	1	16
140.326D	25.40	35	75	50	ERC 25	050.025	1	16



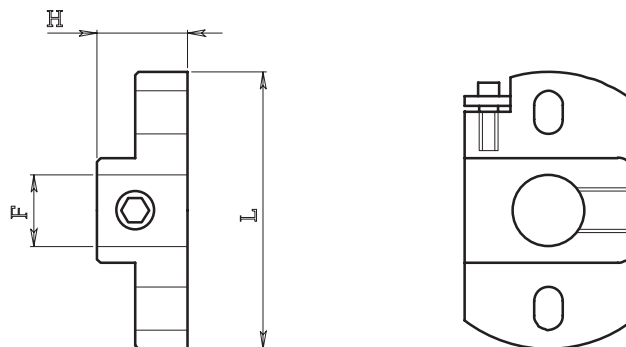
Pinze DIN 6499/B
Collets DIN 6499/B





PIASTRINI Tipo 141
BORING TOOLHOLDERS

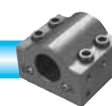
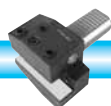
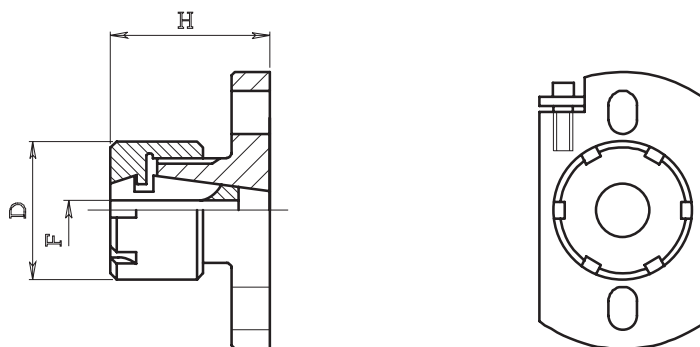
Code				for toolholder
ART.	F	H	L	per portautensile
141.201	15	20	58	140.2 - 142.2
141.301	18	20	64	140.3 - 142.3



PIASTRINI PORTA PINZA Tipo 141
BORING TOOLHOLDERS WITH COLLET

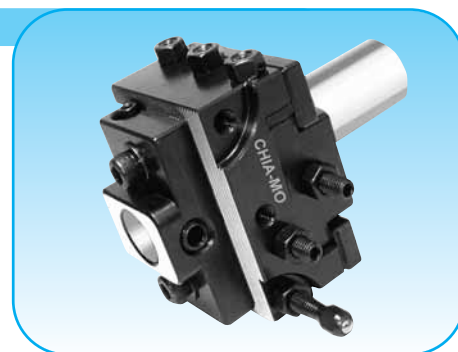
Code			collet	collet code	collet bore	for toolholder	
ART.	H	D	pinza	art. pinza	capacità pinza		per portautensile
					min	max	
141.216	32	22	ERC 16	050.016	1	10	140.2 - 142.2
141.220	36	28	ERC 20	050.020	1	13	140.2 - 142.2
141.320	36	28	ERC 20	050.020	1	13	140.3 - 142.3
141.325	42	35	ERC 25	050.025	1	16	140.3 - 142.3

Pinze DIN 6499/B
Collets DIN 6499/B



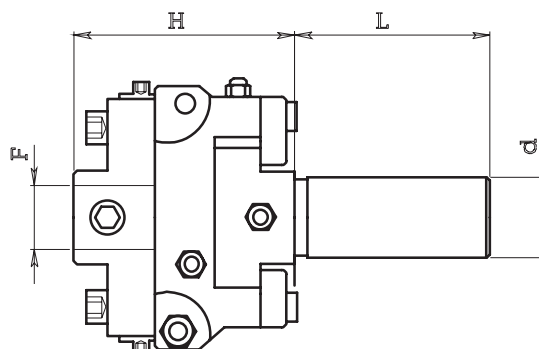


PORTA UTENSILI PER RECESSI INTERNI Tipo 142
RECESSING TOOLHOLDERS



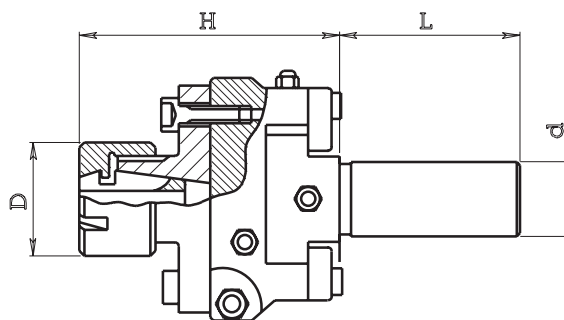
Code					
ART.	d	F	H	L	R
142.219	19.05	15	52	46	20
142.220	20	15	52	46	20
142.222	22	15	52	46	20
142.322	22	18	60	50	24
142.325	25	18	60	50	24
142.326	25.40	18	60	50	24
142.330	30	18	60	50	24
142.331	31.75	18	60	50	24
142.332	32	18	60	50	24

R = Corsa di registrazione
R = adjustable stroke

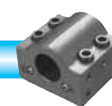
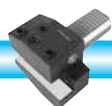


PORTA UTENSILI PER RECESSI INTERNI Tipo 142 CON PINZA
RECESSING TOOLHOLDERS WITH COLLET

Code					collet	collet code	collet bore	
ART.	d	D	H	L	pinza	art. pinza	capacità pinza	
							min	max
142.219B	19.05	22	64	46	ERC 16	050.016	1	10
142.220B	20	22	64	46	ERC 16	050.016	1	10
142.222B	22	22	64	46	ERC 16	050.016	1	10
142.325B	25	22	64	46	ERC 16	050.016	1	10
142.326B	25.40	22	64	46	ERC 16	050.016	1	10
142.219C	19.05	28	68	46	ERC 20	050.020	1	13
142.220C	20	28	68	46	ERC 20	050.020	1	13
142.222C	22	28	68	46	ERC 20	050.020	1	13
142.325C	25	28	76	50	ERC 20	050.020	1	13
142.326C	25.40	28	76	50	ERC 20	050.020	1	13
142.330C	30	28	76	50	ERC 20	050.020	1	13
142.331C	31.75	28	76	50	ERC 20	050.020	1	13
142.332C	32	28	76	50	ERC 20	050.020	1	13
142.219D	19.05	35	82	50	ERC 25	050.025	1	16
142.220D	20	35	82	50	ERC 25	050.025	1	16
142.222D	22	35	82	50	ERC 25	050.025	1	16
142.325D	25	35	82	50	ERC 25	050.025	1	16
142.326D	25.40	35	82	50	ERC 25	050.025	1	16
142.330D	30	35	82	50	ERC 25	050.025	1	16
142.331D	31.75	35	82	50	ERC 25	050.025	1	16
142.332D	32	35	82	50	ERC 25	050.025	1	16



Pinze DIN 6499/B
Collets DIN 6499/B

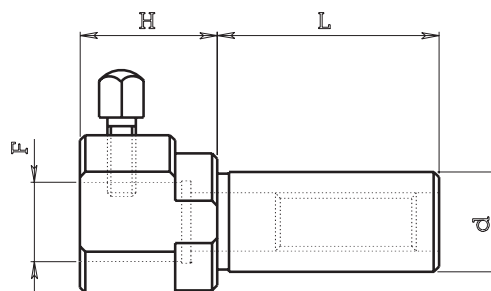




PORTA UTENSILI PER PUNTE CILINDRICHE Tipo 152

TOOLHOLDER FOR CYLINDRICAL SHANK DRILLS

Code				
ART.	d	H	L	F
152.219	19.05	26	32	15
152.220	20	26	46	15
152.325	25	40	46	25
152.326	25.40	40	46	25



PORTA PUNTA REGISTRABILE Tipo 154 CON PINZA

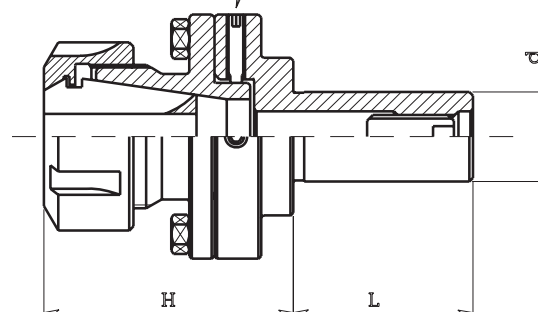
ADJUSTABLE COLLET CHUCKS

Pinze DIN 6499/B
Collets DIN 6499/B

Code				collet	collet code
ART.	d	H	L	pinza	art. pinza
154.219	19.05	42	44	ERC 20	050.020
154.220	20	42	44	ERC 20	050.020
154.322	22	57	50	ERC 32	050.032
154.325	25	57	50	ERC 32	050.032
154.326	25.40	57	50	ERC 32	050.032
154.330	30	57	50	ERC 32	050.032
154.331	31.75	57	50	ERC 32	050.032
154.332	32	57	50	ERC 32	050.032



n.4 Filetti per registrare la centratura

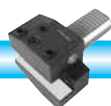
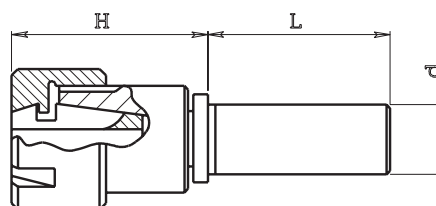


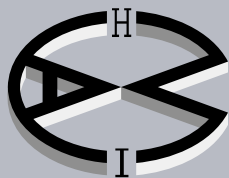
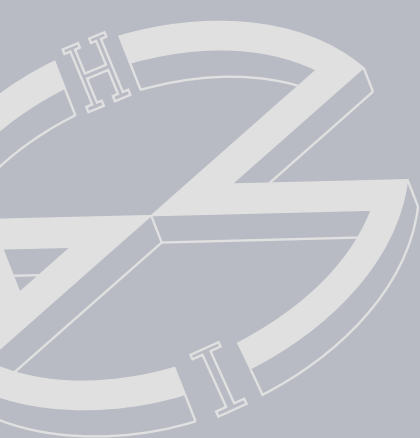
PORTA ALESATORI OSCILLANTI Tipo 156 CON PINZA

REAMER HOLDERS WITH COLLET

Pinze DIN 6499/B
Collets DIN 6499/B

Code				collet	collet code
ART.	d	H	L	pinza	art. pinza
156.119	19.05	42	46	ERC 20	050.020
156.120	20	42	46	ERC 20	050.020
156.222	22	46	50	ERC 25	050.025
156.225	25	46	50	ERC 25	050.025
156.226	25.40	46	50	ERC 25	050.025
156.230	30	46	50	ERC 25	050.025
156.231	31.75	46	50	ERC 25	050.025
156.232	32	46	50	ERC 25	050.025





CHIA-MO

ITALY

DOVE SIAMO WHERE WE ARE



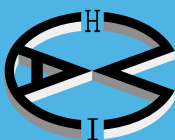
CHIA-MO

Via Caduti di Sabbiuno, 12

40011 Anzola dell'Emilia (Bologna) Italy

Tel. +39 051 734153 - Fax +39 051 734958

info@chiamo.it - www.chiamo.it



CHIA-MO
ITALY



Via Caduti di Sabbiuono, 12
40011 Anzola dell'Emilia (Bologna) Italy
Tel. +39 051 734153 - Fax +39 051 734958
info@chiamo.it - www.chiamo.it

